

## Installation Instructions

### Technical Support

If you experience any problems during the installation, please call Follett Technical Service toll-free at (877) 612-5086 for assistance.

### Description

Follow these instructions to install the Maestro Plus ice machine module into your Symphony FB, CT, and CI dispenser.

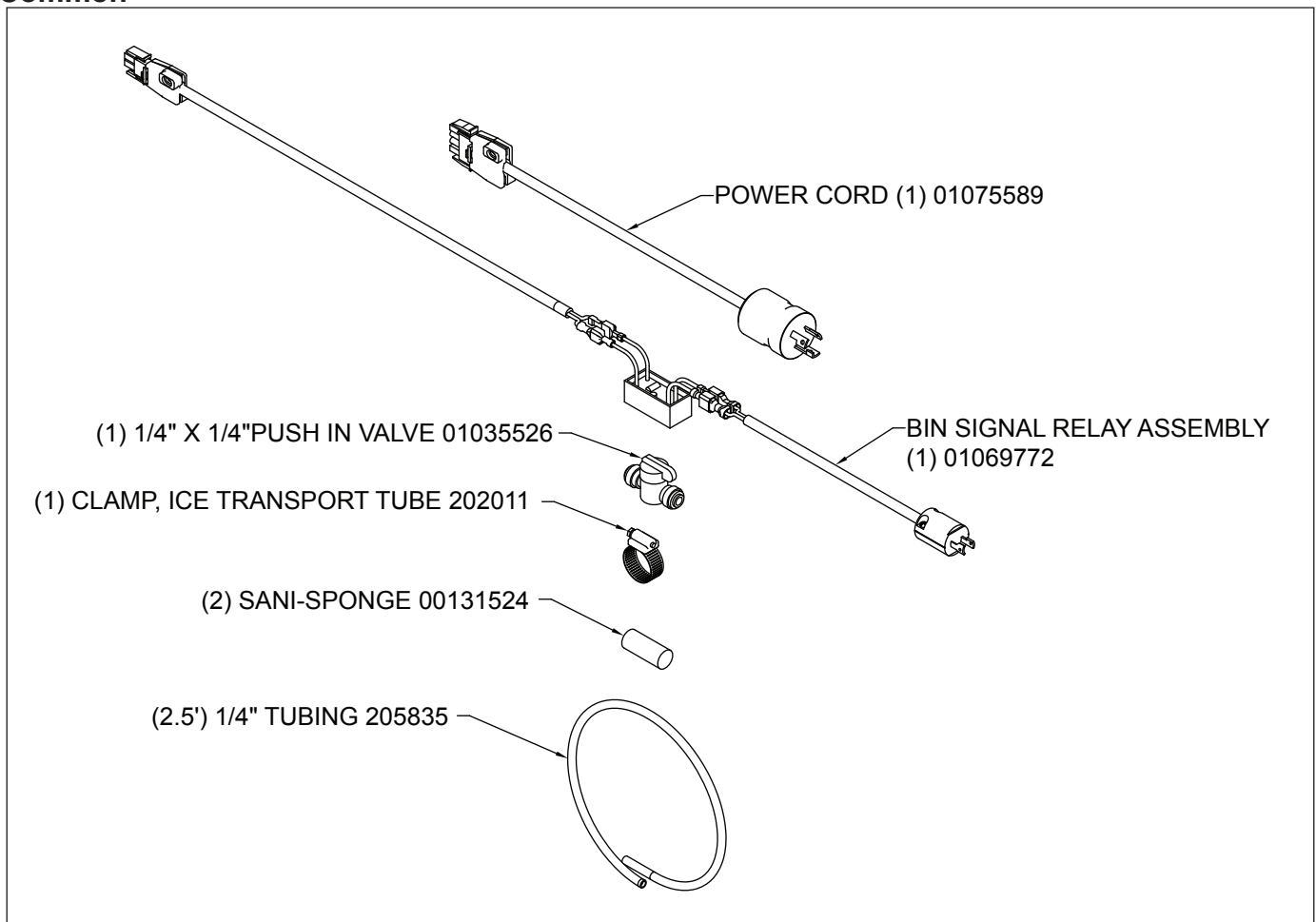


#### **CAUTION!**

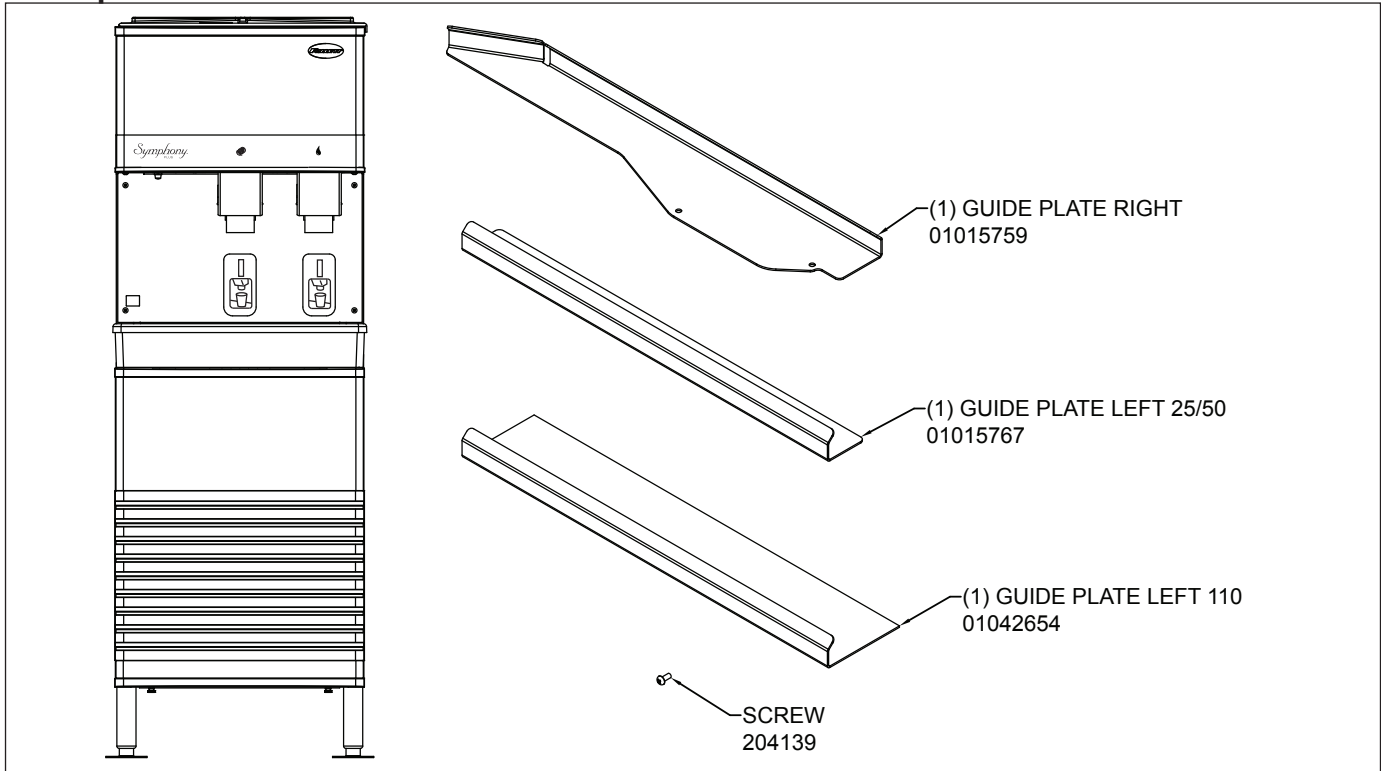
*Only qualified technicians should attempt to service or maintain this equipment.*

### Parts

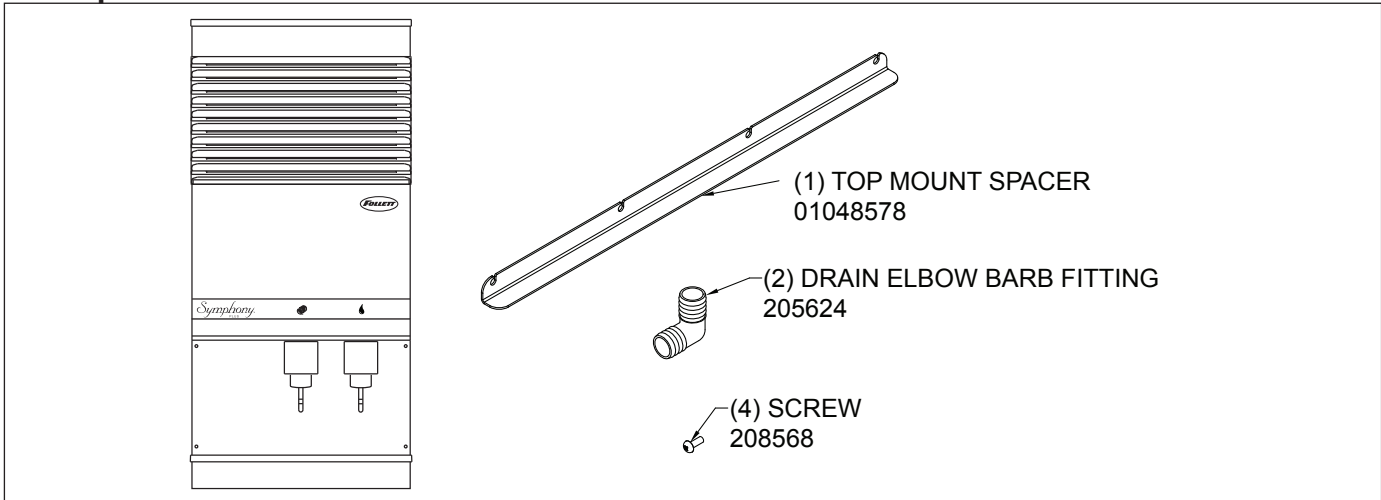
#### Common



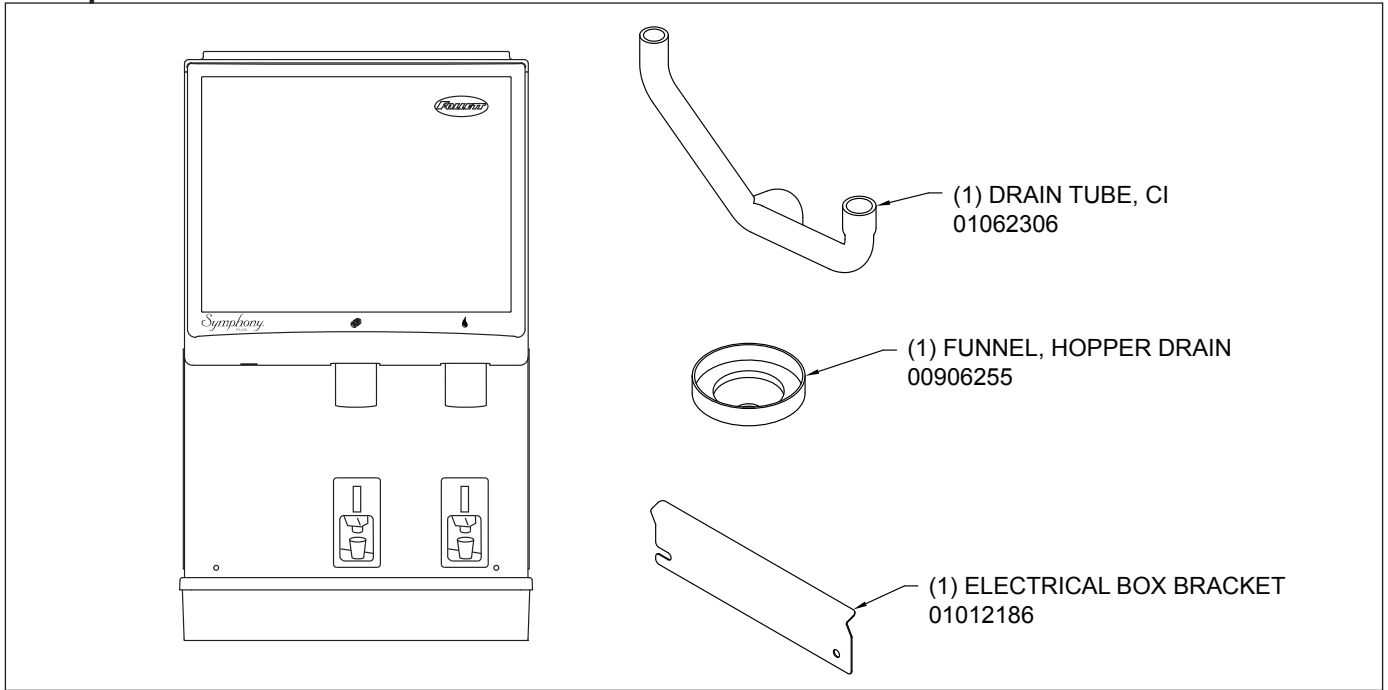
## FB Dispensers



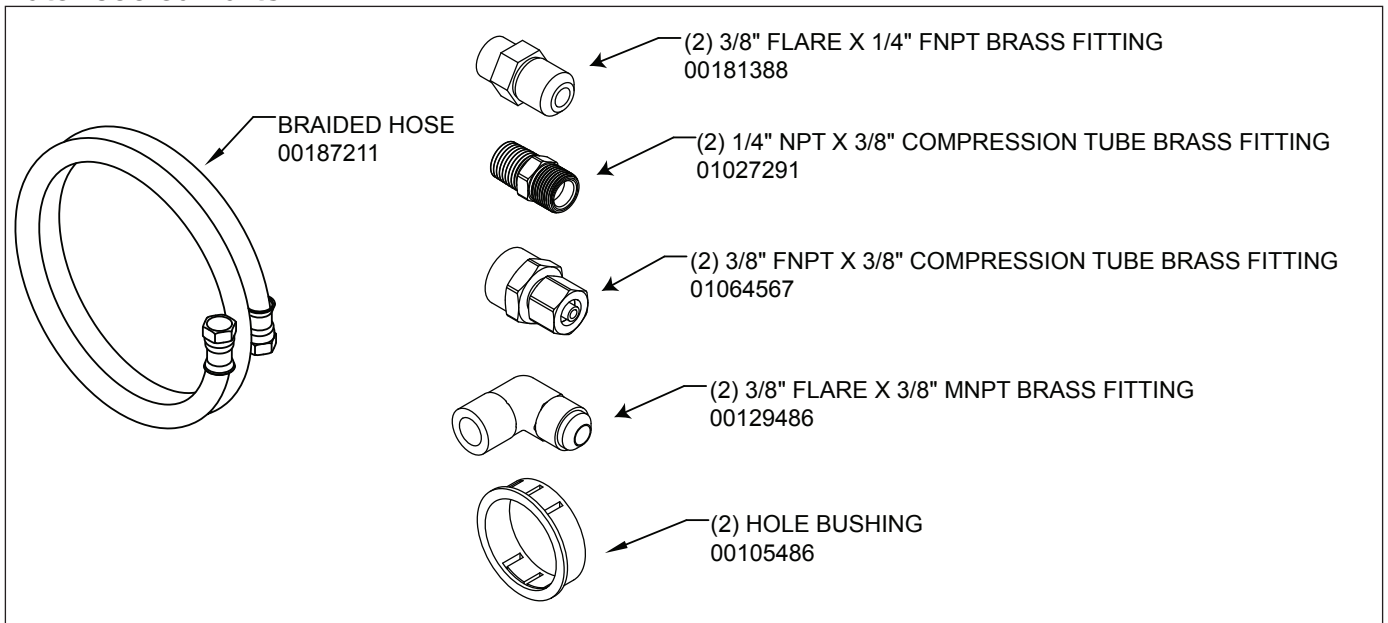
## CT Dispensers



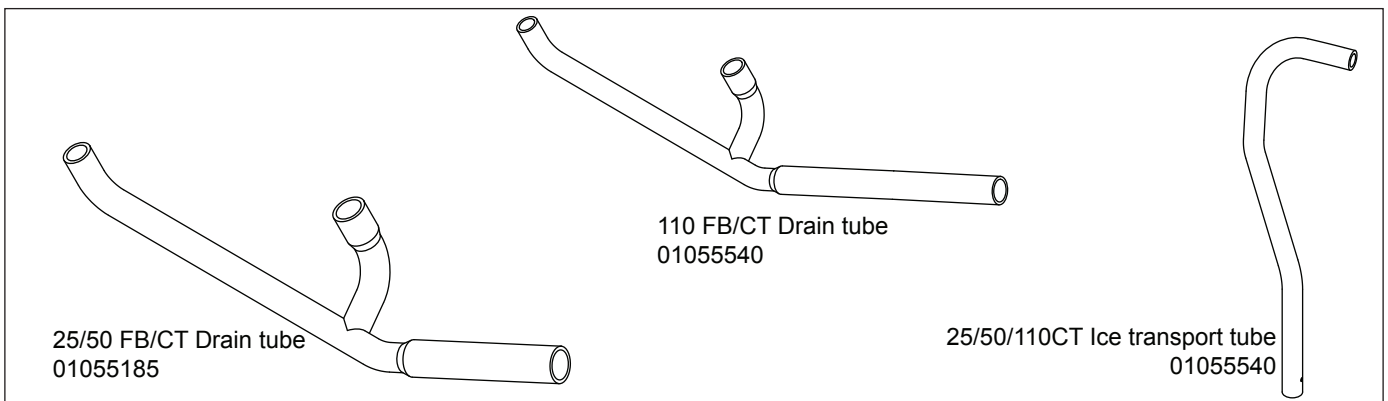
## CI Dispensers



## Water-cooled Parts



## Tubes



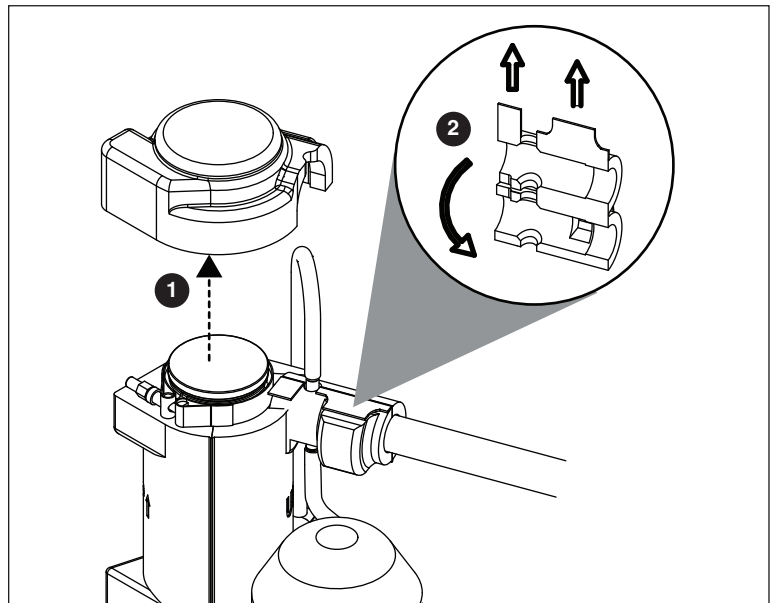
## FB Units - 25/50/110FB425A

### Remove Ice Machine Module

1. Disconnect power from unit and turn off water supply.
2. Remove existing module.
3. On new ice machine, remove the top bearing insulation (**Fig. 1.1**) and compression nozzle insulation (**Fig. 1.2**).

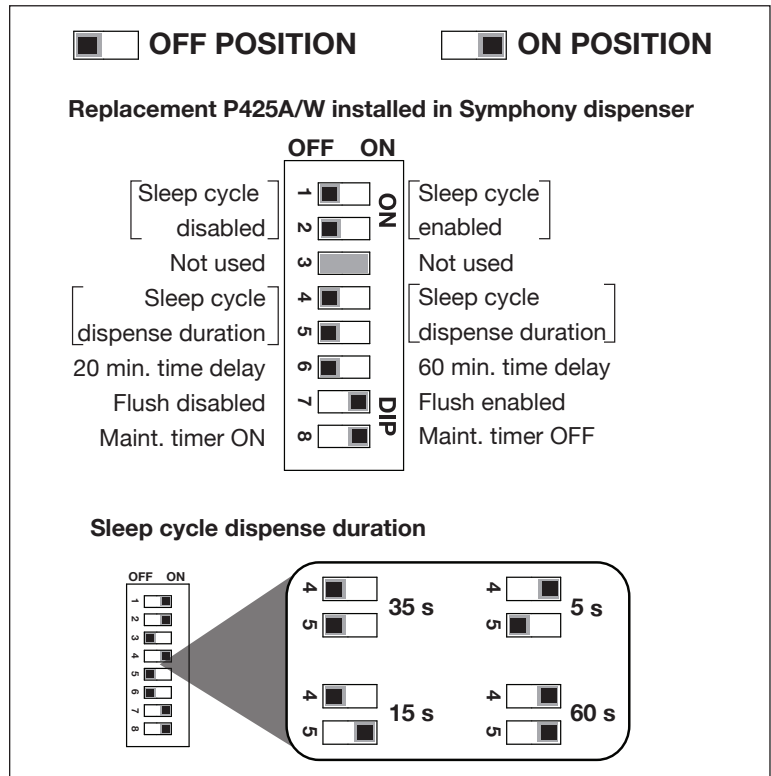
**Note:** Retain ice transport tube and hose clamp.

Fig. 1



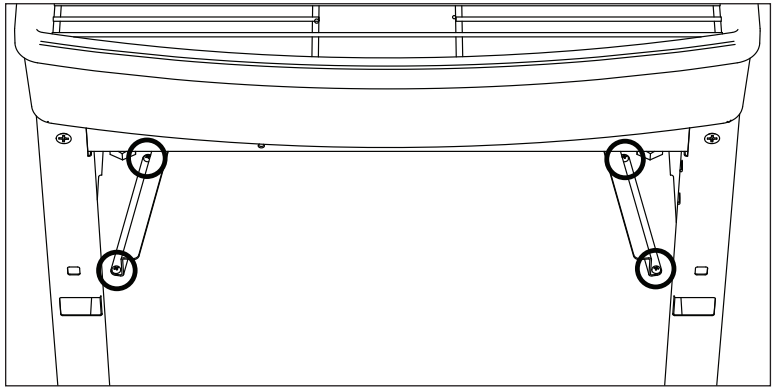
4. On new ice machine, remove the ice machine electrical box cover and set DIP switches (**Fig. 2**).
5. Reinstall ice machine electrical box cover.

Fig. 2



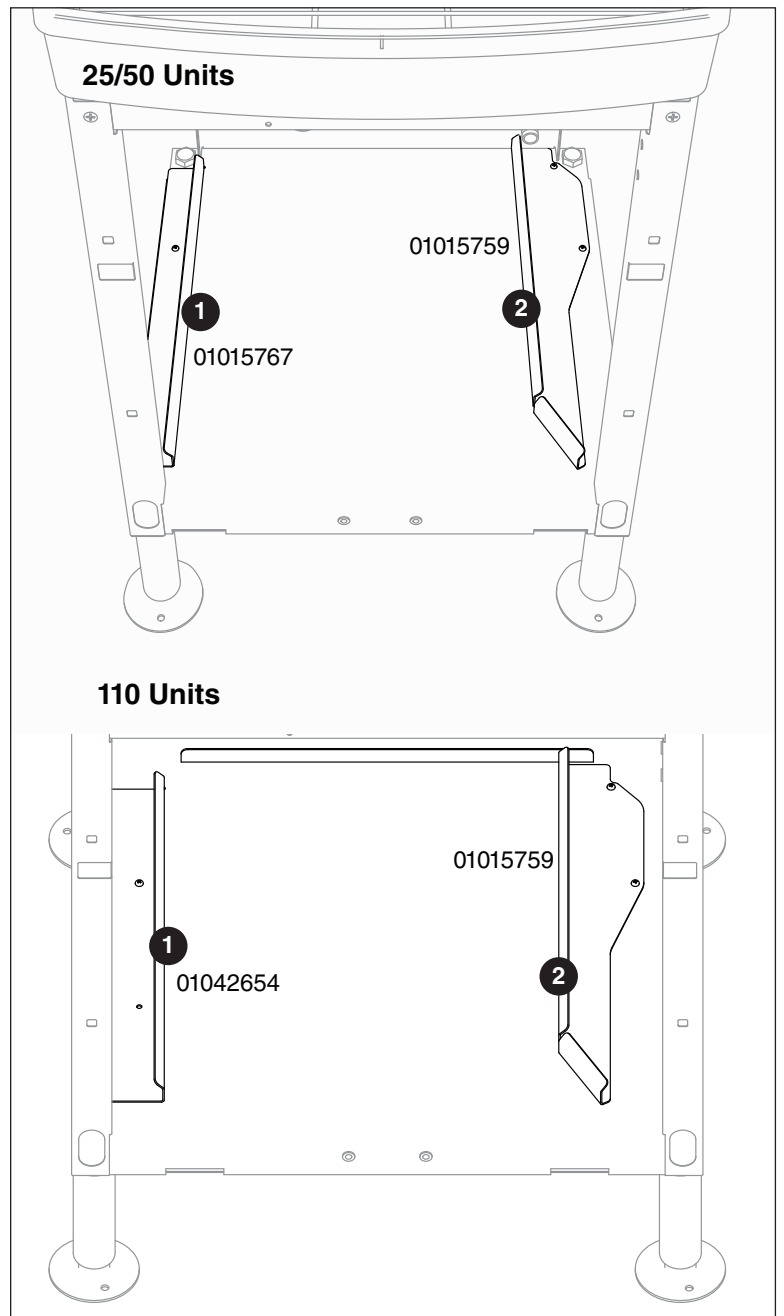
6. Remove right and left rear module positioning bracket (**Fig. 3**).  
**Note:** Do not discard the 4 screws, they will be reused.

**Fig. 3**



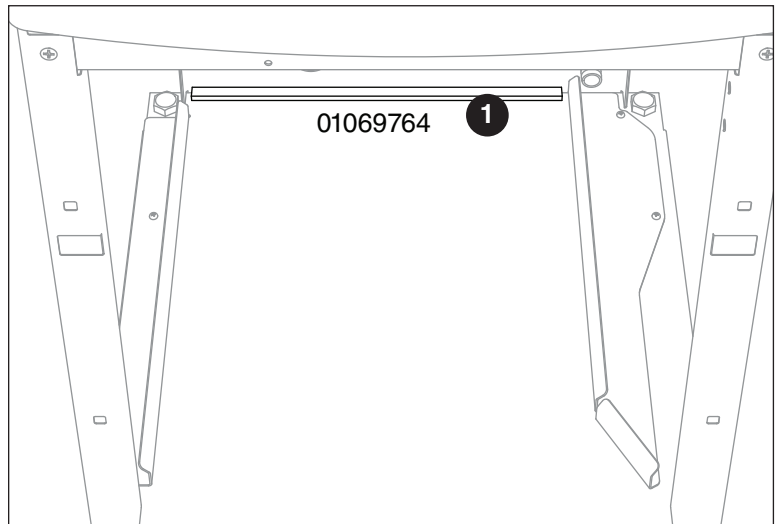
7. Using the hardware specific for your application, install supplied Left (**Fig. 4.1**) and Right (**Fig. 4.2**) locating brackets using screws from previous step.  
**Note:** Left side only uses 1 screw.

**Fig. 4**



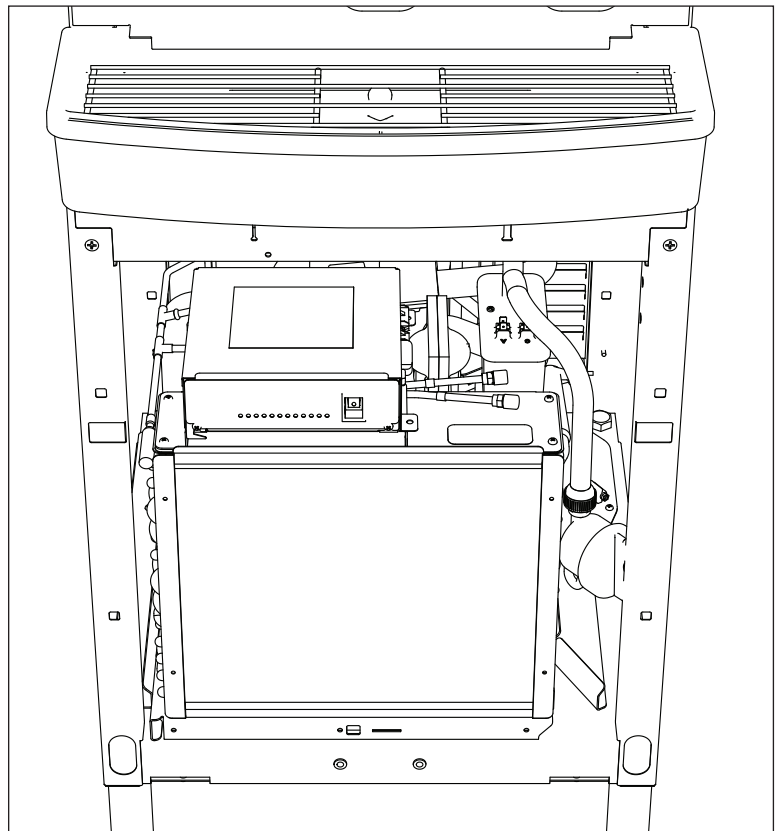
8. **25/50 Units Only:** Install gray plastic spacer (**Fig. 5.1**) against rear of cabinet.

**Fig. 5**



9. Slide supplied module into position (**Fig. 6**).

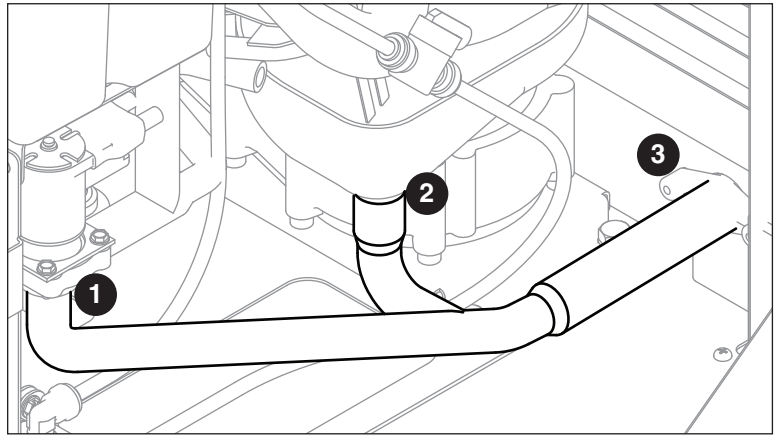
**Fig. 6**



10. Install supplied drain tube onto drain solenoid (**Fig. 7.1**), evaporator drain pan (**Fig. 7.2**), and rear drain fitting (**Fig. 7.3**). Tube may need to be cut to fit onto existing rear drain fitting.

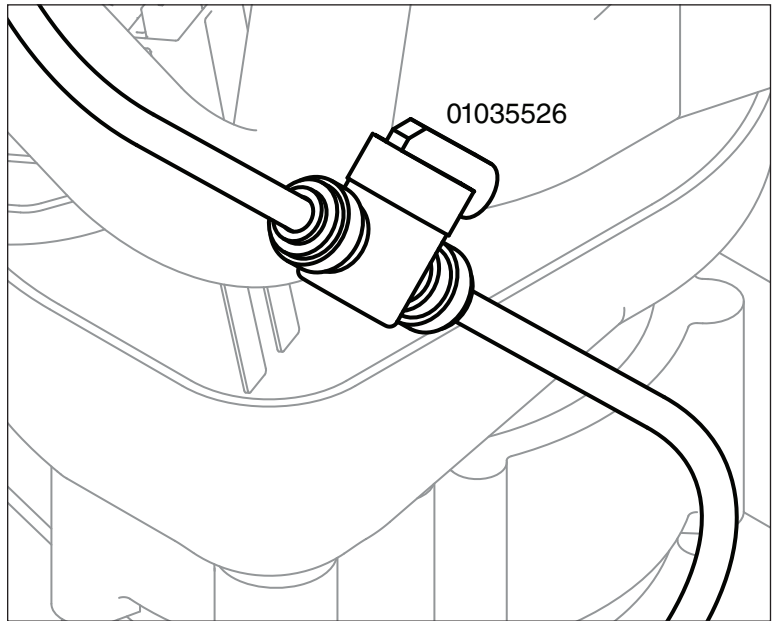
- 25/50 Drain tube: 01055185
- 110 Drain tube: 01055540

**Fig. 7**



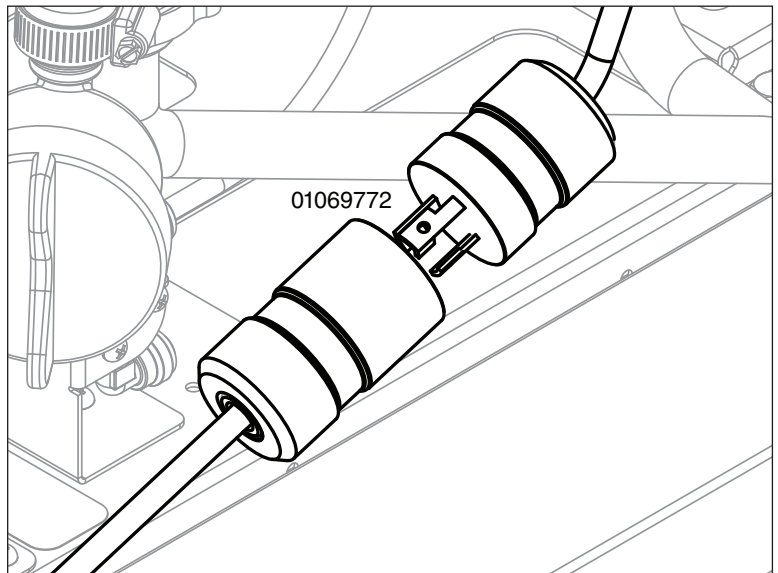
11. Cut compression fitting from end of existing water tube. Connect existing water supply tube to attached solenoid water tube with supplied ¼" shut off valve (**Fig. 8**).

**Fig. 8**



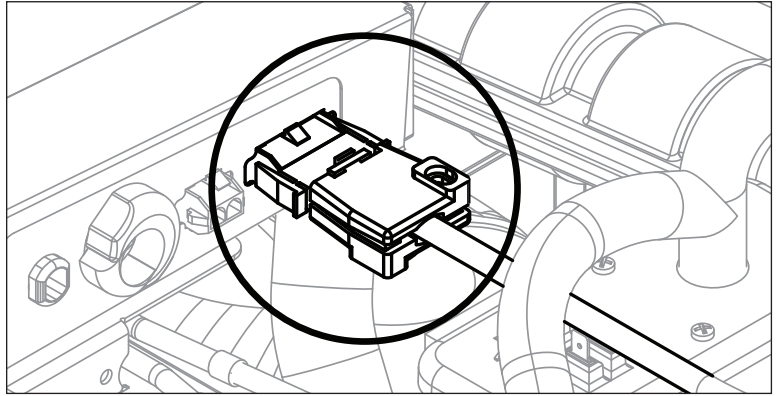
12. Install supplied internal power cord adapter (Twist-Lock) (**Fig. 9**).

**Fig. 9**



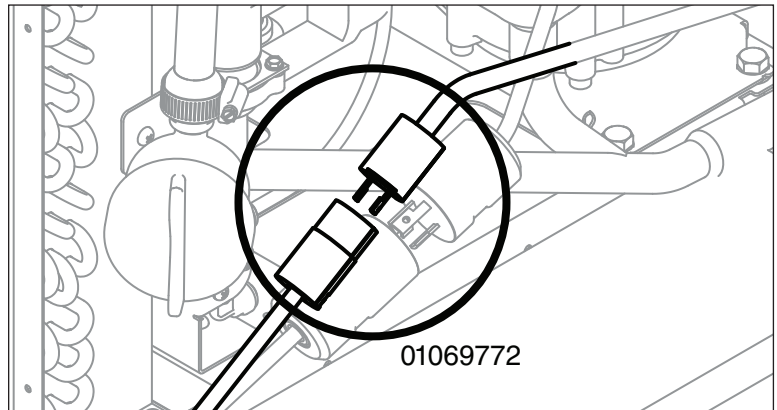
13. Plug other end (Mate N Lock) into electrical box (**Fig. 10**).

**Fig. 10**



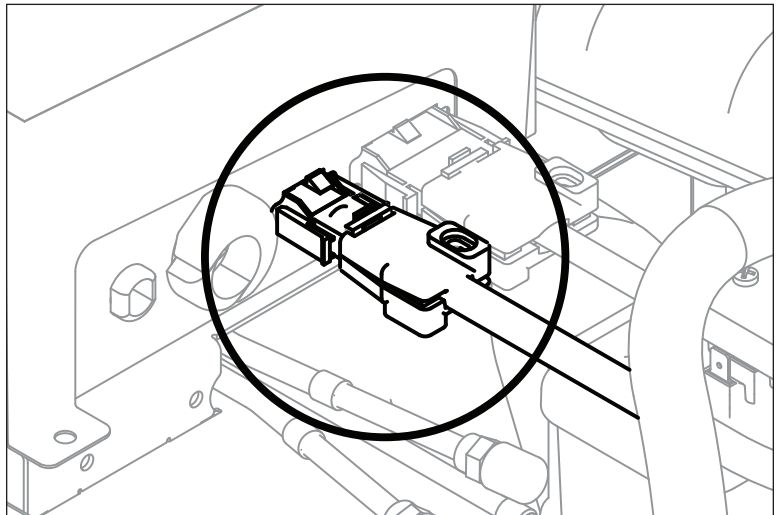
14. Install supplied internal bin signal cord adapter (Twist-Lock) (**Fig. 11**).

**Fig. 11**



15. Plug other end (Mate N Lock) into electrical box (**Fig. 12**).

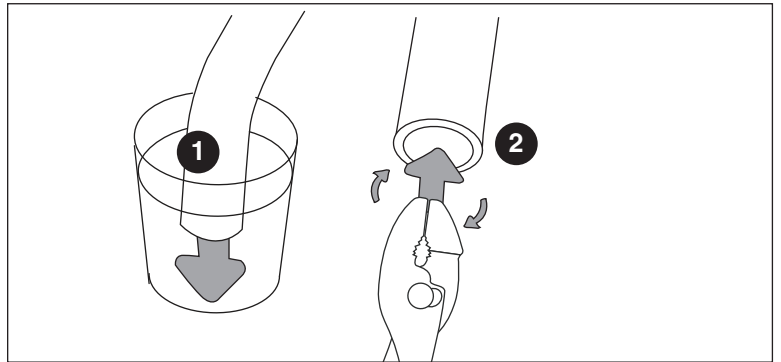
**Fig. 12**





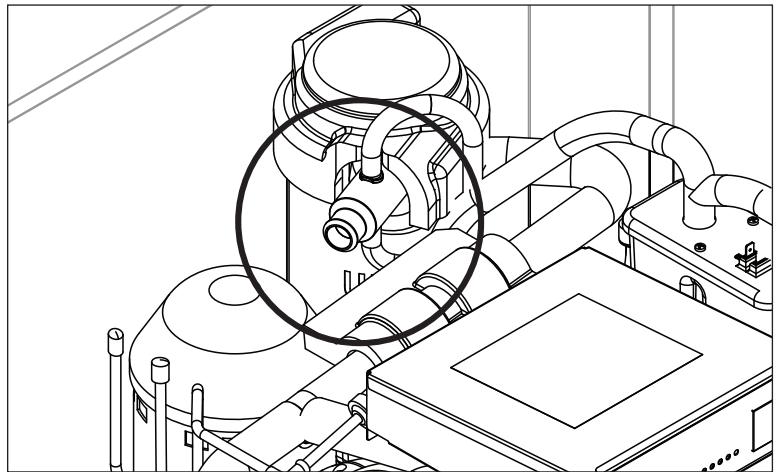
16. Heat end of existing ice transport tube in cup of 160 F (71 C) hot water to soften (**Fig. 13.1**) and spread with pliers (**Fig. 13.2**).

**Fig. 13**



17. Attach end of ice transport tube to compression nozzle (**Fig. 14**).

**Fig. 14**



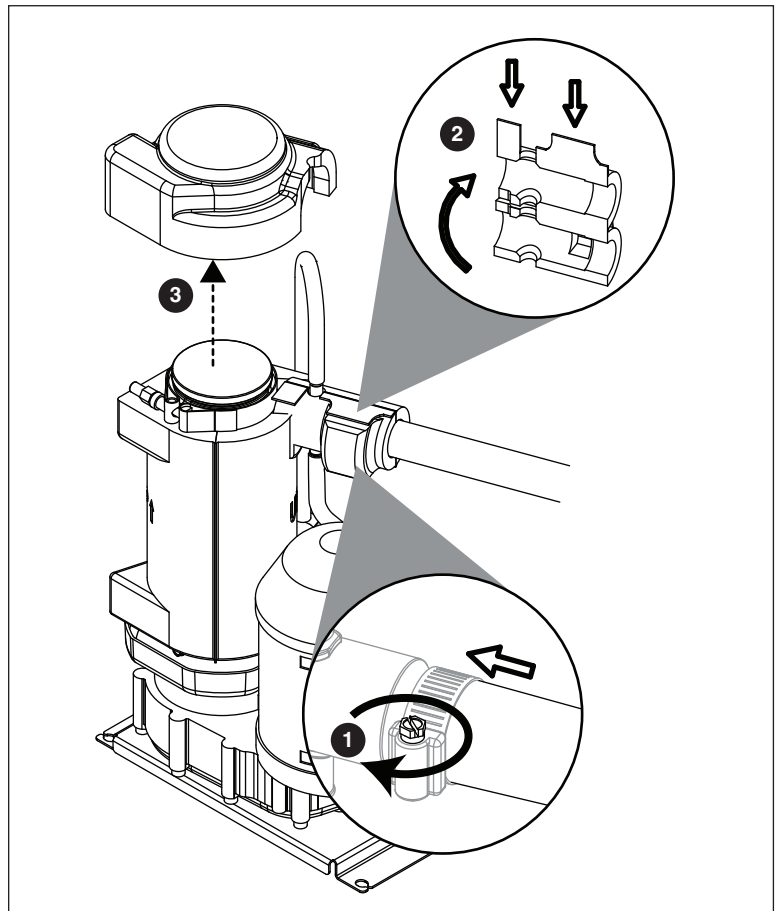
18. Secure with clamp (Fig. 15.1).

**Note:** Clamp **must be oriented as shown** in order for the insulation to be placed properly.

19. Install compression nozzle insulation (Fig. 15.2).

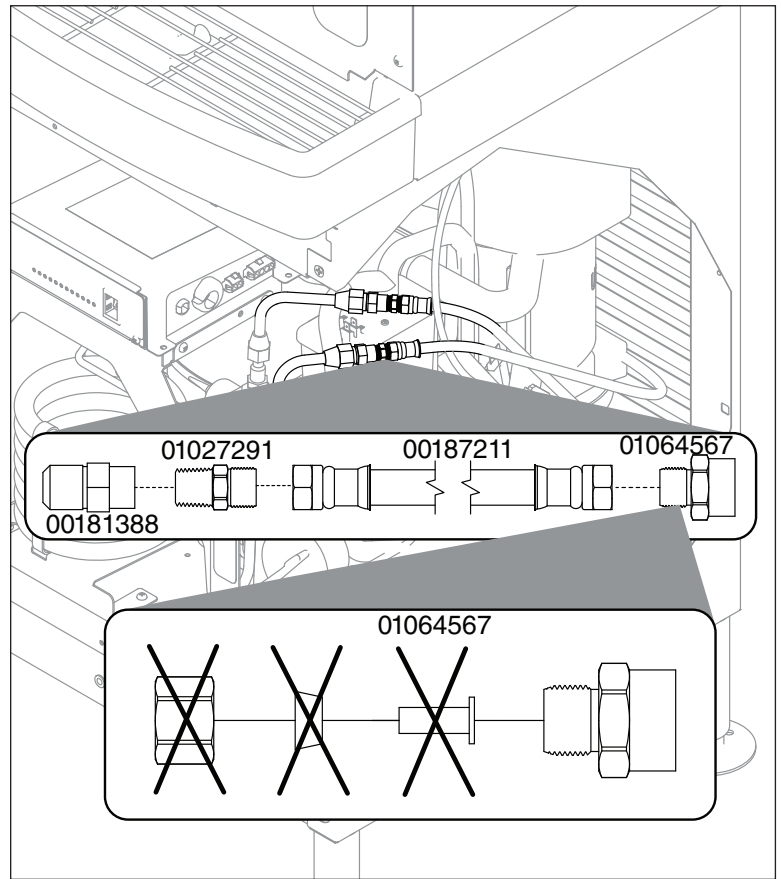
20. Install top bearing insulation (Fig. 15.3).

Fig. 15



21. For water-cooled units, make water connections (Fig. 16).

Fig. 16



- 22. Restore power and water to machine.
- 23. Sanitize machine prior to use.
- 24. Reinstall side panels, start up machine and check for proper operation.

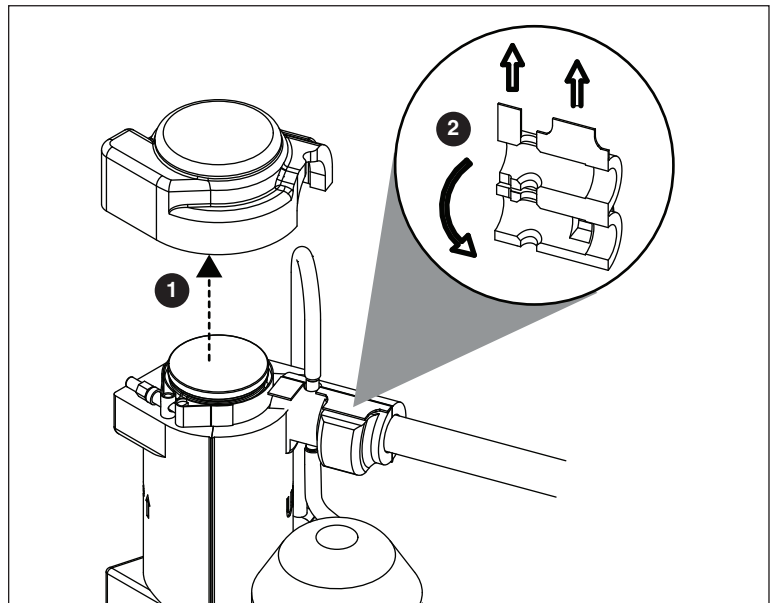
## CT Units - 25/50/110CT425A

### Remove Ice Machine Module

1. Disconnect power from unit, turn off water supply, and remove side panels.
2. Remove existing module.
3. On new ice machine, remove the top bearing insulation (**Fig. 1.1**) and compression nozzle insulation (**Fig. 1.2**).

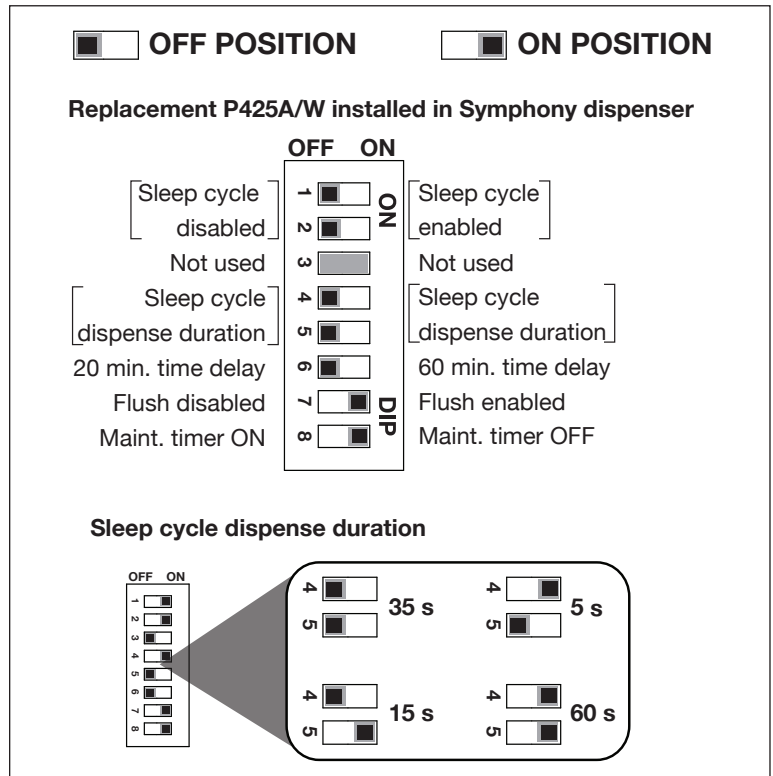
**Note:** Retain ice transport tube and hose clamp.

Fig. 1



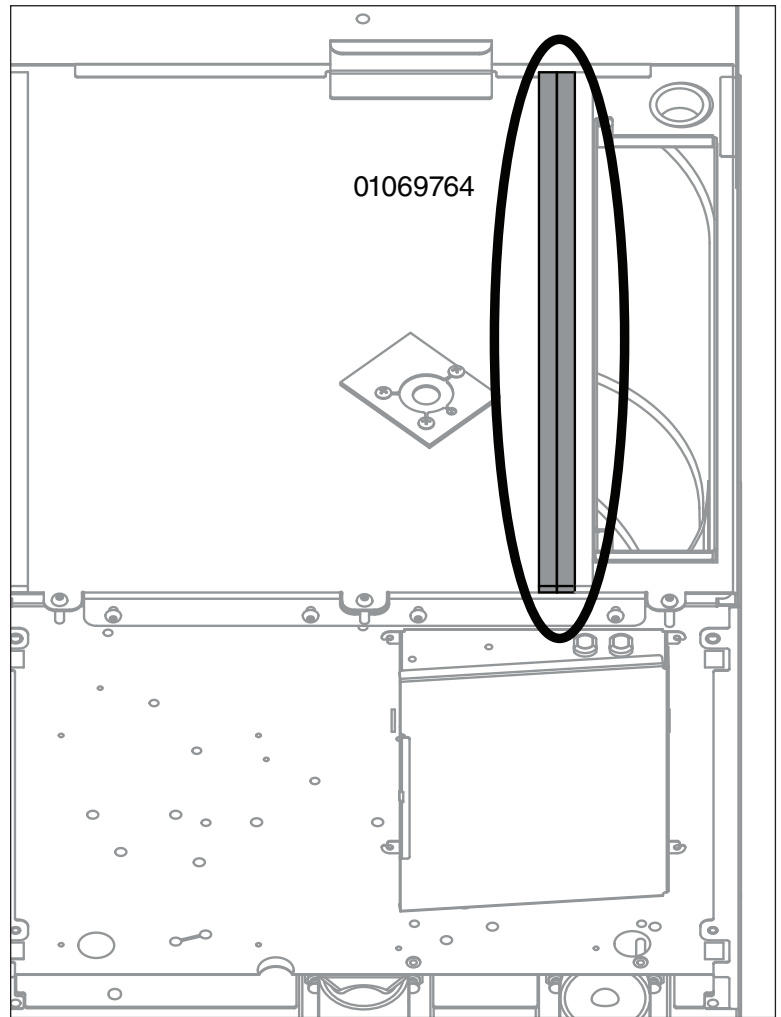
4. On new ice machine, remove the ice machine electrical box cover and set DIP switches (**Fig. 2**).
5. Reinstall ice machine electrical box cover.

Fig. 2



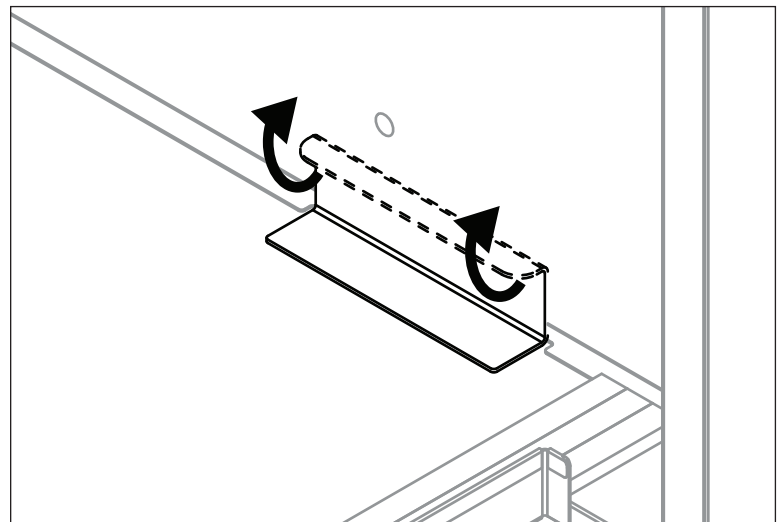
6. Remove backing from two PVC strips and install as shown (**Fig. 3**).

**Fig. 3**



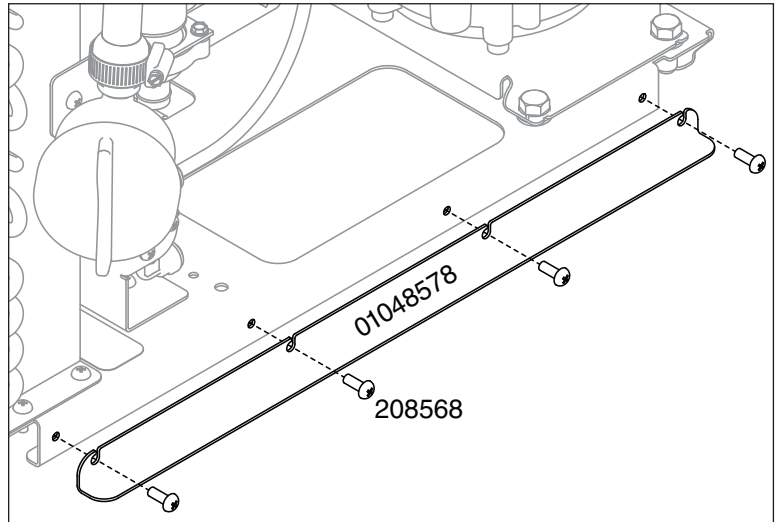
7. It may be necessary to slightly bend up the bracket located at the rear of the cabinet to ease installation (**Fig. 4**).

**Fig. 4**



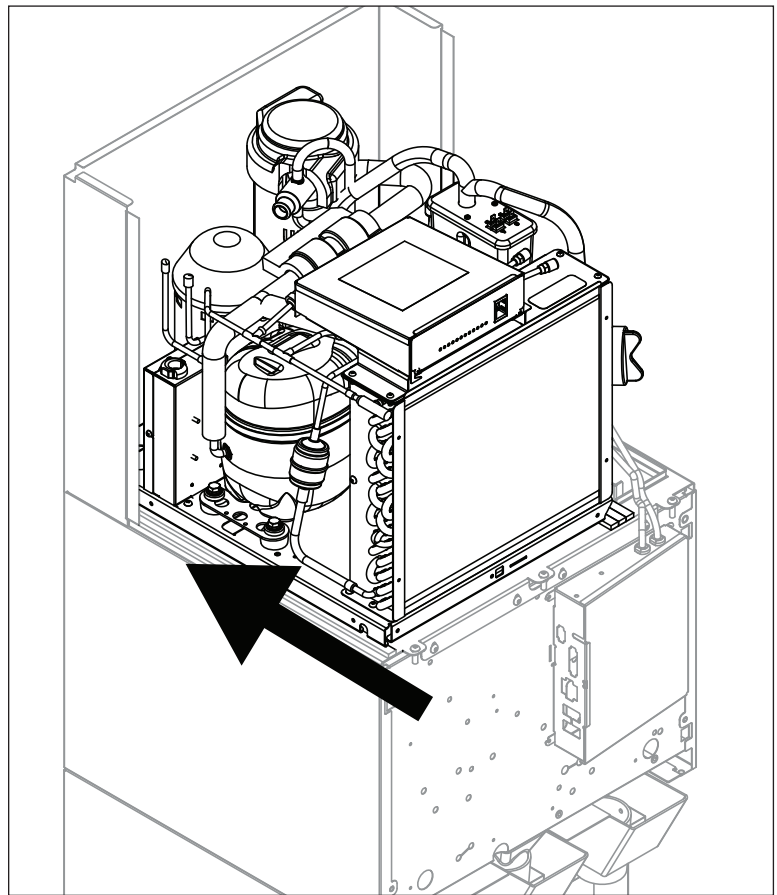
8. Install spacer bracket (01048578) on righthand side of machine with supplied screws (**Fig. 5**).

**Fig. 5**



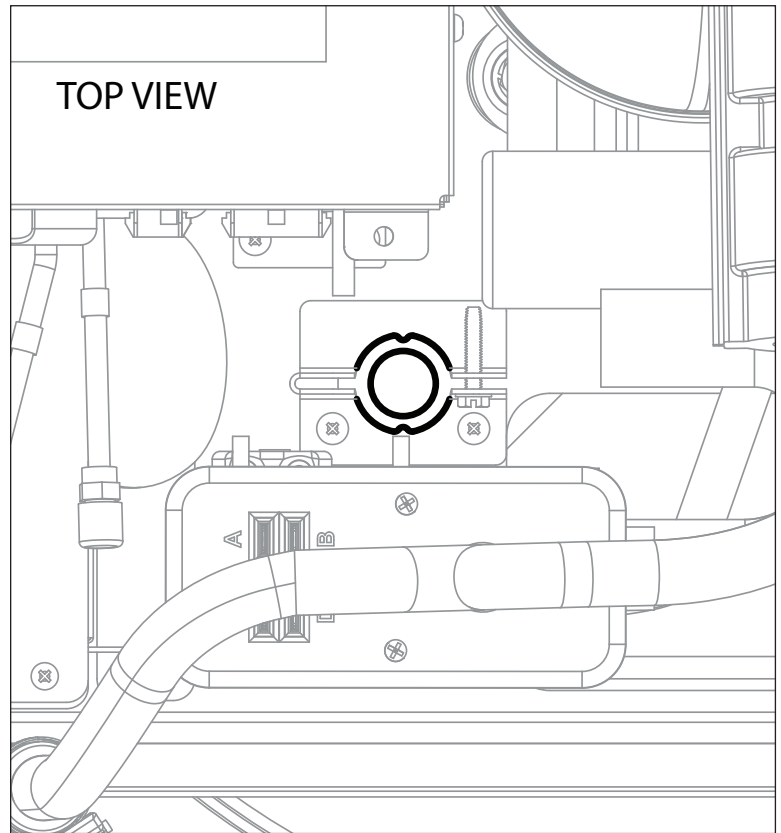
9. Slide supplied module into position (**Fig. 6**).

**Fig. 6**



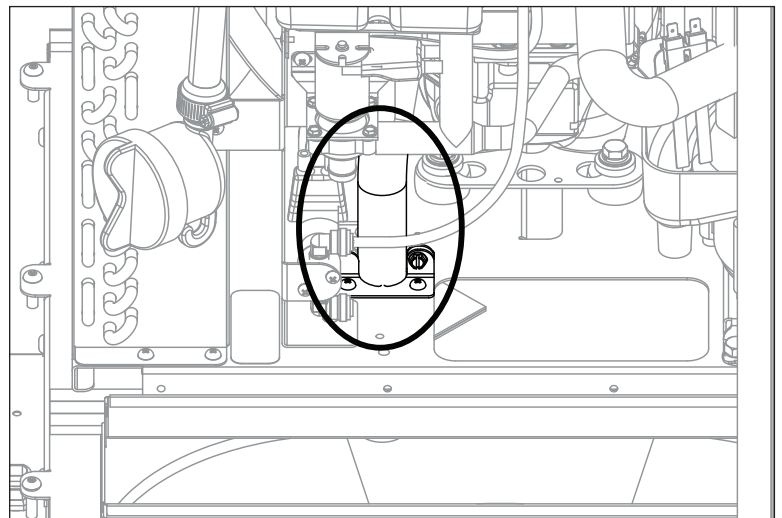
10. Position module so that the ice transport hole in the module base is aligned with the hole in the dispenser (**Fig. 7**).

**Fig. 7 - Top View of Ice Machine**



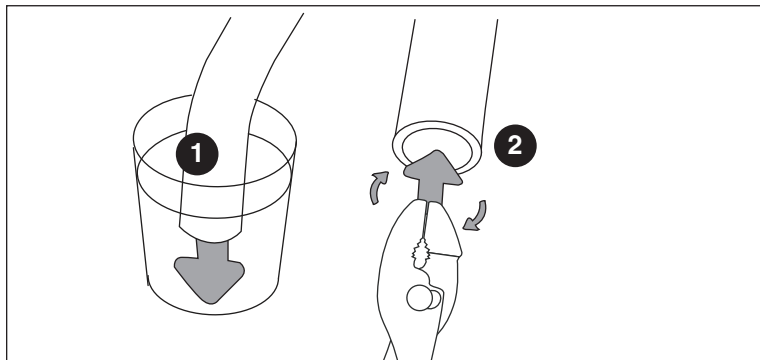
11. Route supplied ice transport hose (01003532) down through hose clamp until it extends at least 1" into dispenser bin (**Fig. 8**). Tighten hose clamp to secure ice transport tube.

**Fig. 8**



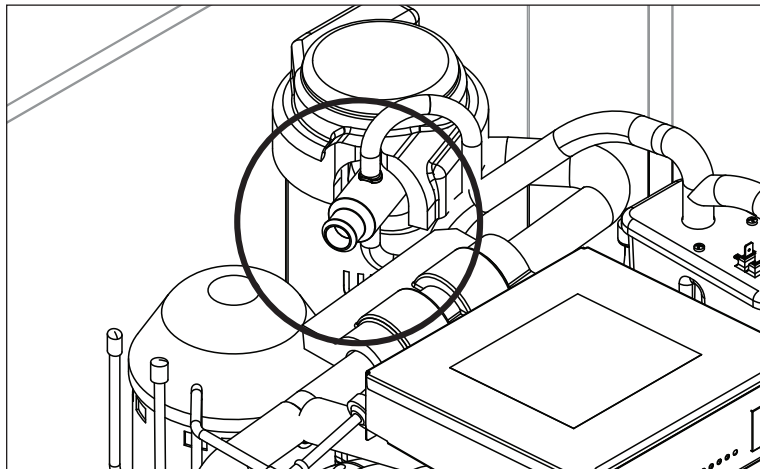
12. Heat other end of supplied ice transport tube in cup of 160 F (71 C) hot water to soften (**Fig. 9.1**) and spread with pliers (**Fig. 9.2**).

**Fig. 9**



13. Attach end of ice transport tube to compression nozzle (**Fig. 10**).

**Fig. 10**





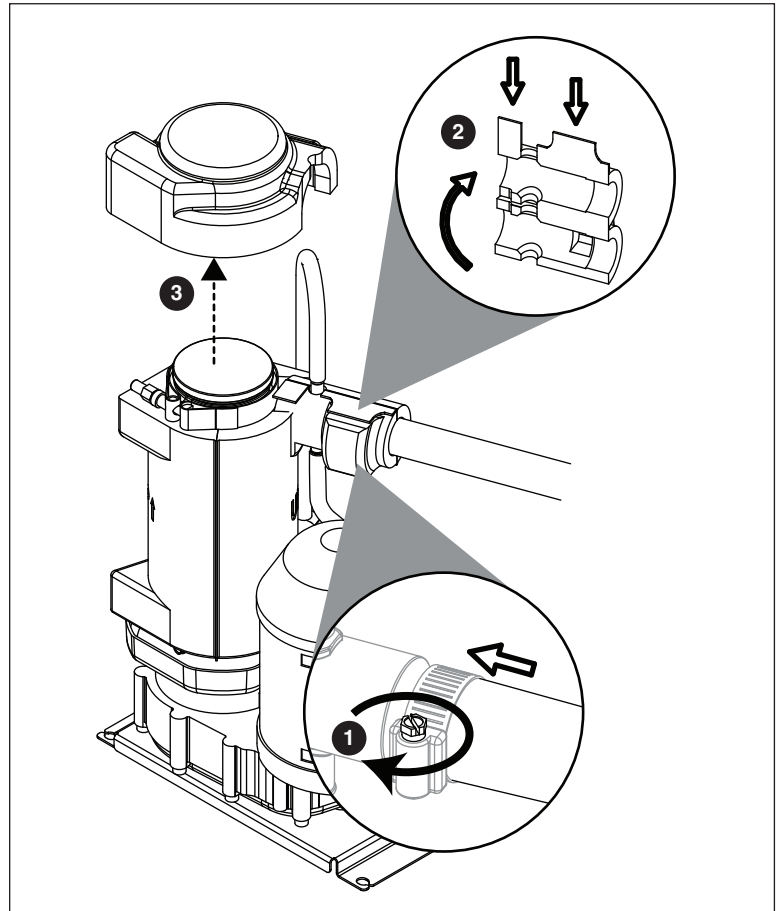
14. Secure with clamp (Fig. 11.1).

**Note:** Clamp **must be oriented as shown** in order for the insulation to be placed properly.

15. Install compression nozzle insulation (Fig. 11.2).

16. Install top bearing insulation (Fig. 11.3).

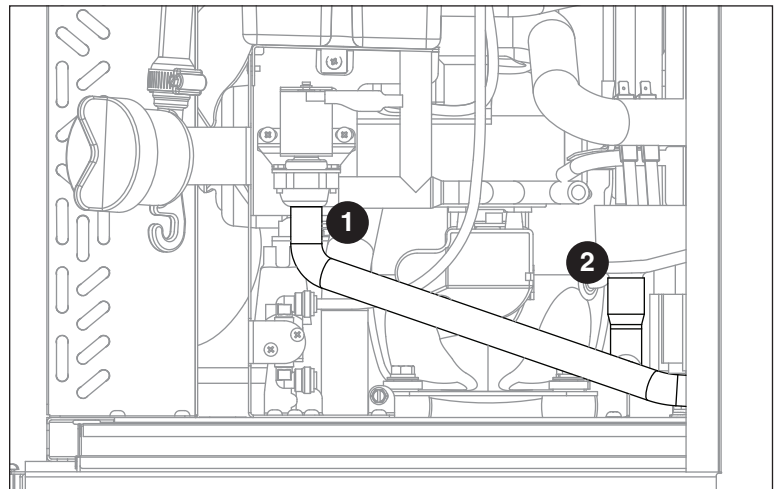
Fig. 11



17. Install supplied drain tube onto drain solenoid (Fig. 12.1) and evaporator drain pan (Fig. 12.2).

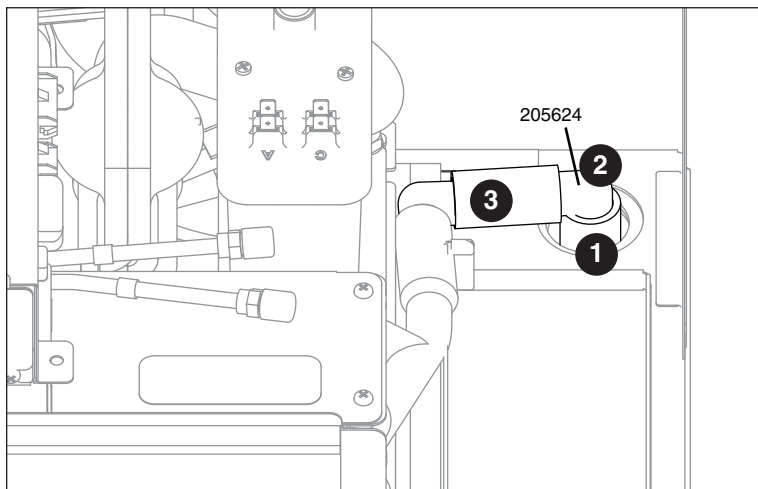
**Note:** Use the long tube (01055540) for 110 models and the shorter tube (01055185) for 25/50 models.

Fig. 12



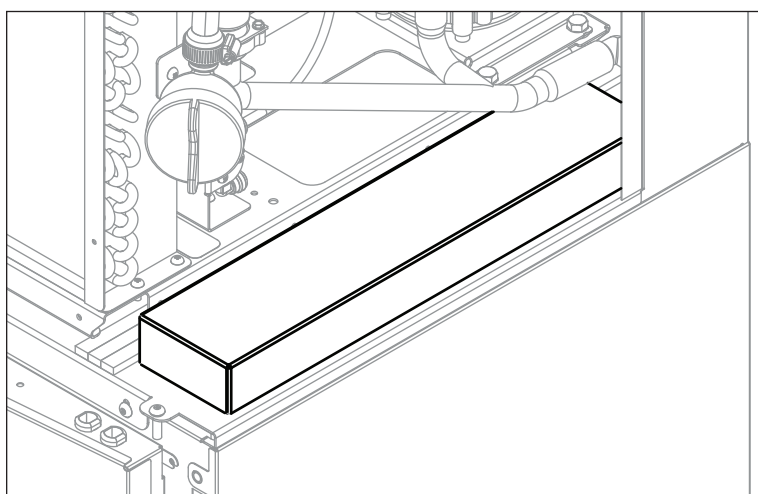
18. Trim the existing CLEAR drain hose so that it protrudes 1" above the base of the module (**Fig. 13.1**).
19. Insert one supplied 3/4" barbed elbow (**Fig. 13.2**) into clear drain hose
20. Trim enough from the end of the GRAY drain hose (**Fig. 13.3**) so that it can be connected between the 3/4" barbed elbows.

**Fig. 13**



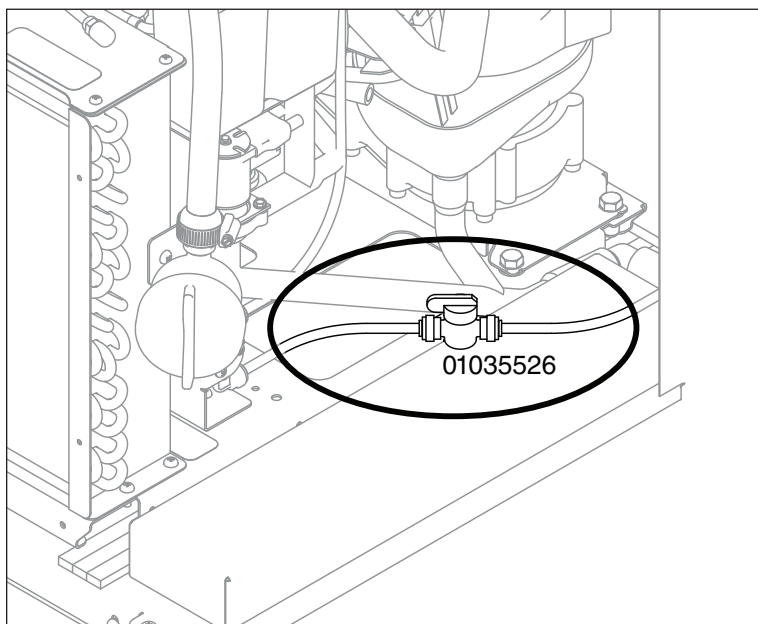
21. Replace bin access cover (**Fig. 14**).

**Fig. 14**



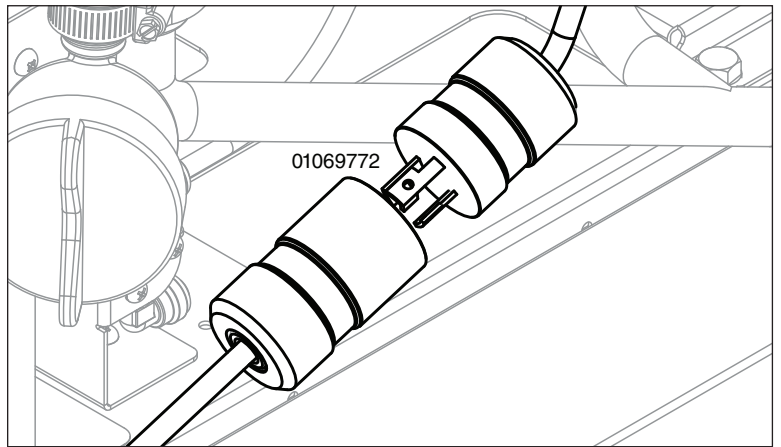
22. Cut compression fitting from end of existing water tube. Connect existing water supply tube to attached solenoid water tube with supplied 1/4" shut off valve (**Fig. 15**).

**Fig. 15**



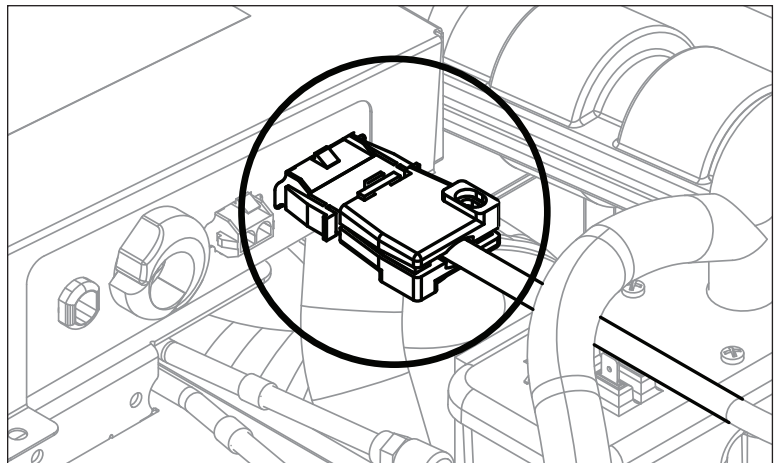
23. Install supplied internal power cord adapter (Twist-Lock) (**Fig. 16**).

**Fig. 16**



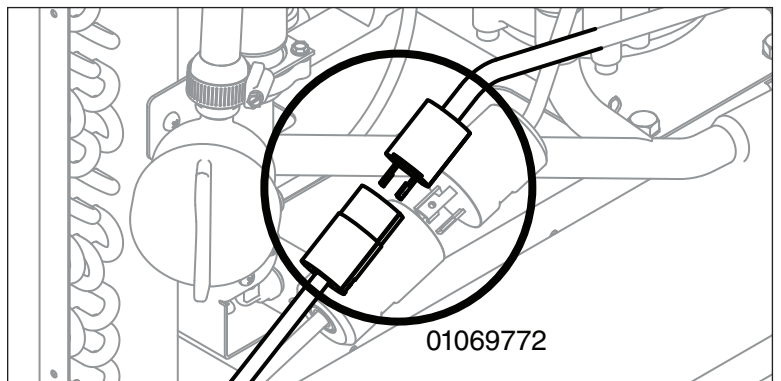
24. Plug other end (Mate N Lock) into electrical box (**Fig. 17**).

**Fig. 17**



25. Install supplied internal bin signal cord adapter (Twist-Lock) (**Fig. 18**).

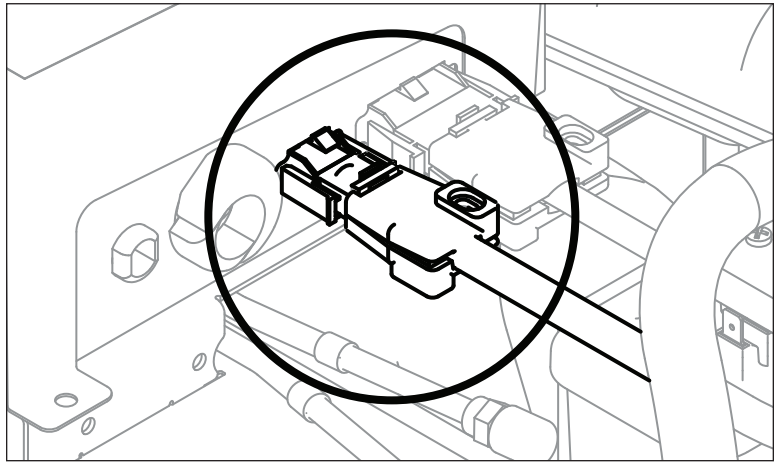
**Fig. 18**



26. Plug other end (Mate N Lock) into electrical box (**Fig. 19**).

**Note:** Contact closure only, do not supply power.

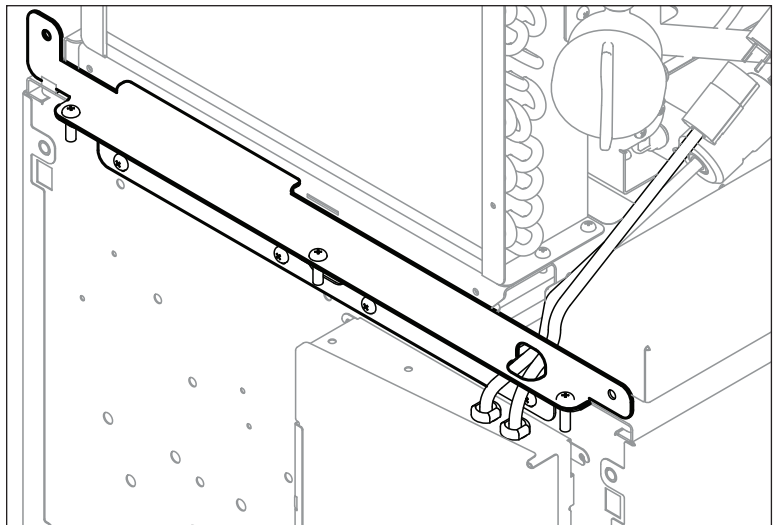
**Fig. 19**



27. Reinstall existing ice machine hold-down bracket (**Fig. 20**).

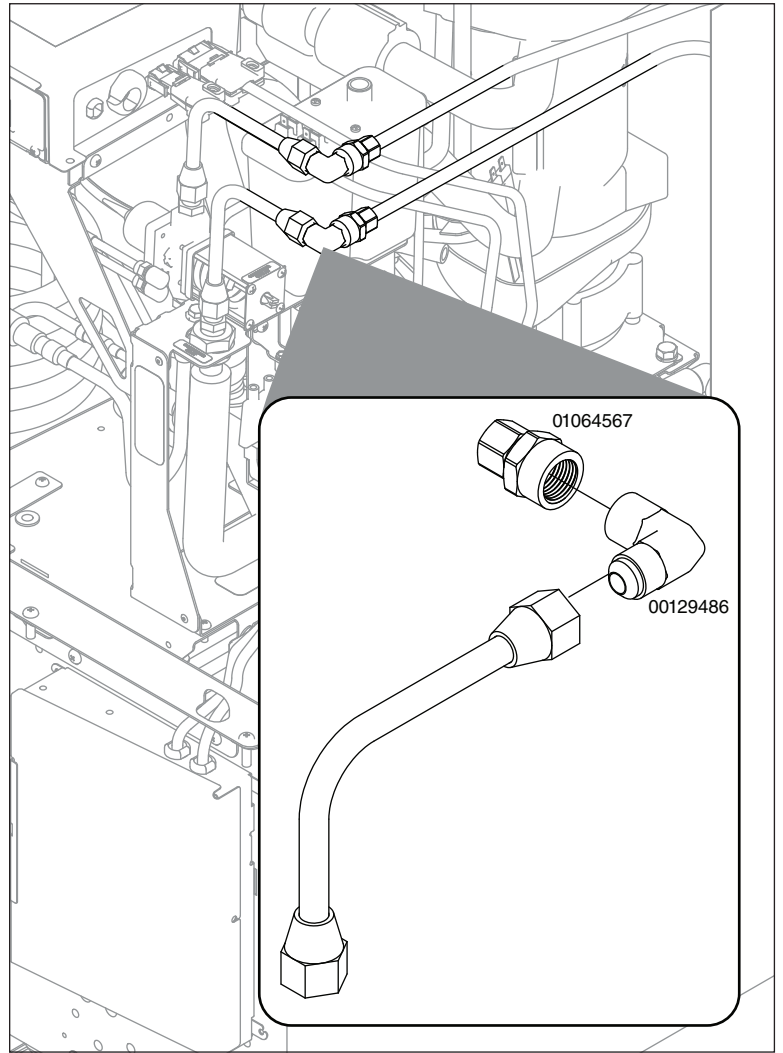
**Note:** Ensure that power cords **are not** pinched; route as shown in **Fig. 20**.

**Fig. 20**



28. For water-cooled units, make water connections (**Fig. 21**).
29. Restore power and water to machine.
30. Sanitize machine prior to use.
31. Reinstall side panels, start up machine and check for proper operation.

**Fig. 21**



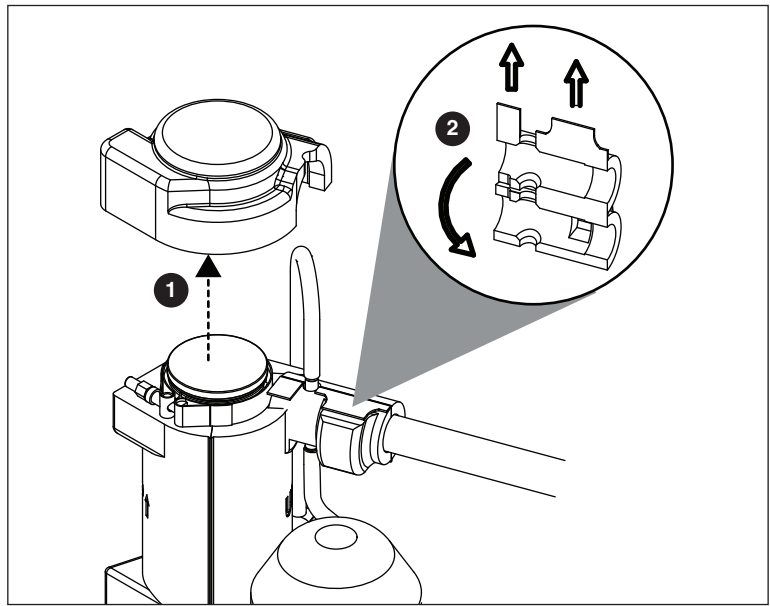
# CI Units - 25/50CI425A

## Remove Ice Machine Module

1. Disconnect power from unit, turn off water supply, remove screws from splash panel, shut off water to dispense solenoid, remove splash panel.
2. Remove existing module.
3. On new ice machine, remove the top bearing insulation (**Fig. 1.1**) and compression nozzle insulation (**Fig. 1.2**).

**Note:** Retain ice transport tube and hose clamp.

Fig. 1

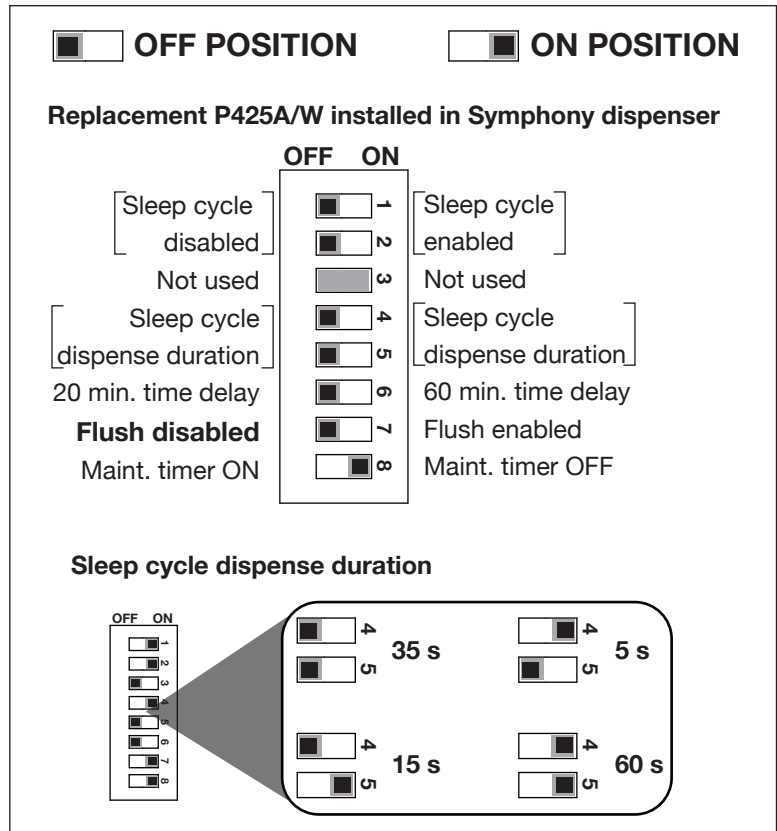


4. On new ice machine, remove the ice machine electrical box cover and set DIP switches (**Fig. 2**).

**Note:** To avoid a possible overflow condition, DIP switch 7 (Flush) must be set to 'disabled.'

5. Reinstall ice machine electrical box cover.

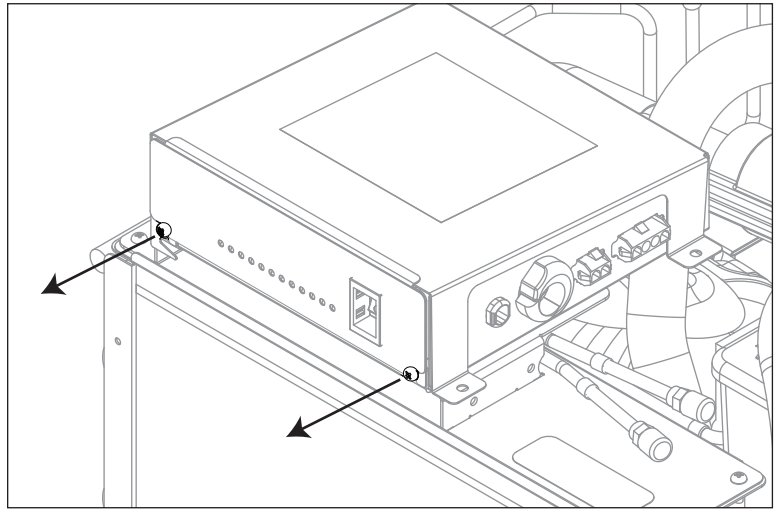
Fig. 2



## Remove Ice Machine Module

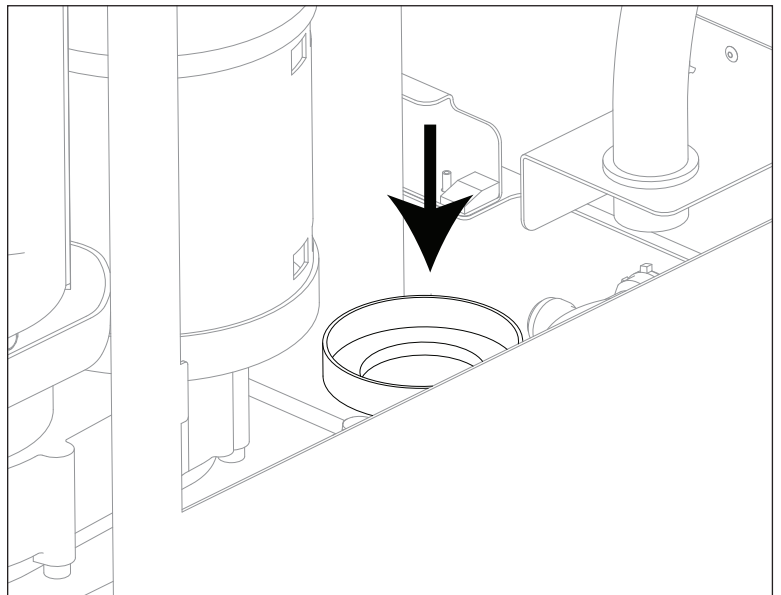
6. Remove two screws securing electrical box to condenser (**Fig. 3**).
7. Cut wire tie from electrical cable bundle.

Fig. 3



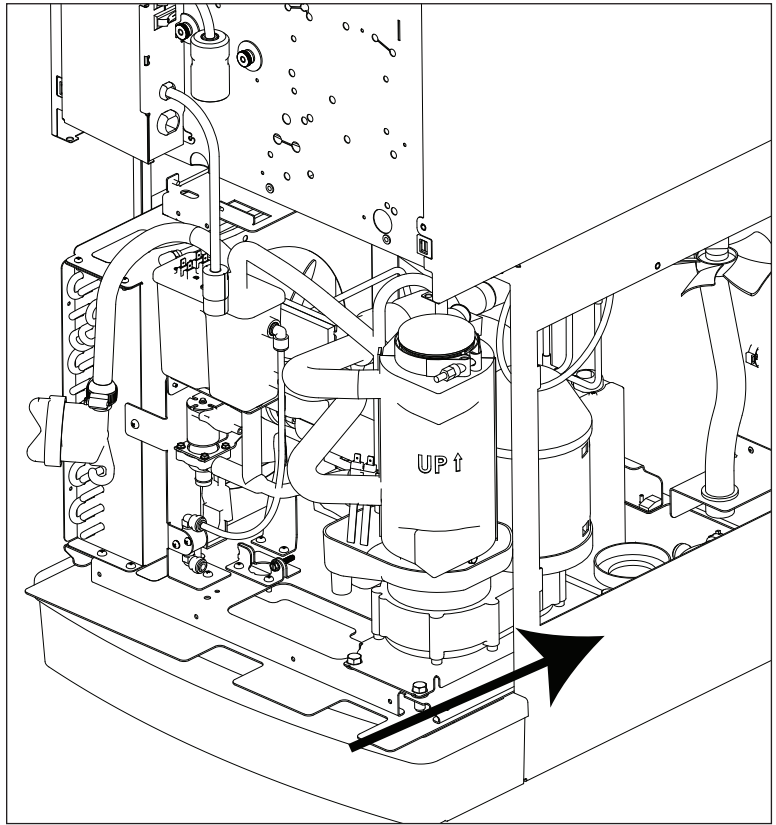
8. Install supplied funnel (**Fig. 4**).

Fig. 4



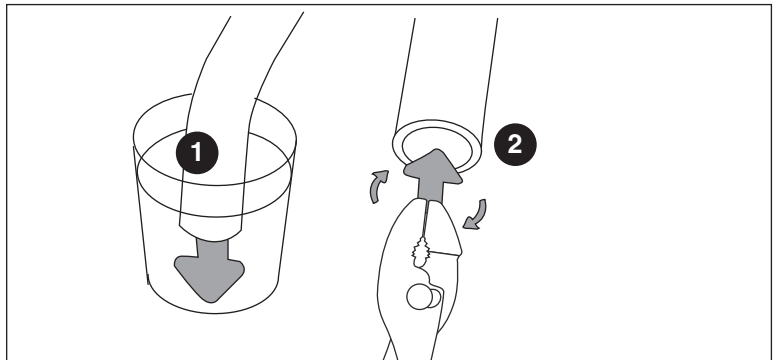
9. Slide supplied module only partially into dispenser cabinet (**Fig. 5**).

**Fig. 5**



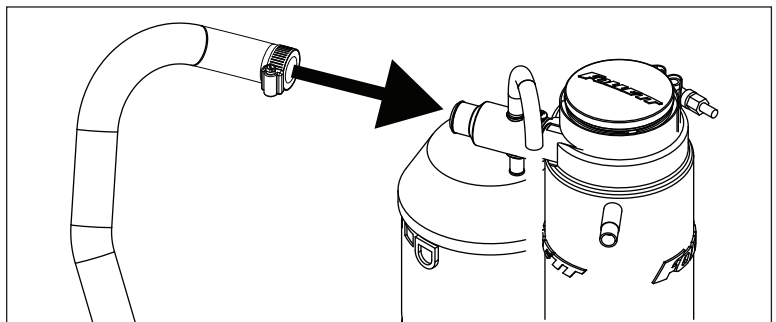
10. Heat end of existing ice transport tube in cup of 160 F (71 C) hot water to soften (**Fig. 6.1**) and spread with pliers (**Fig. 6.2**).

**Fig. 6**



11. Attach ice transport tube to evaporator compression nozzle (**Fig. 7**).

**Fig. 7**





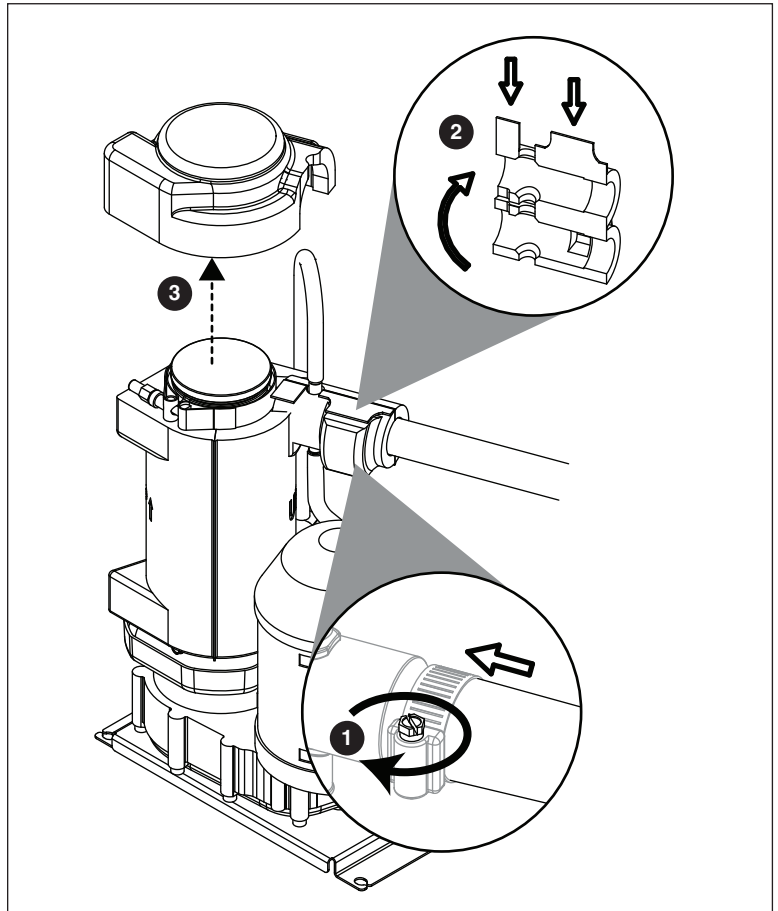
12. Secure with clamp (Fig. 8.1).

**Note:** Clamp **must be oriented as shown** in order for the insulation to be placed properly.

13. Install compression nozzle insulation (Fig. 8.2).

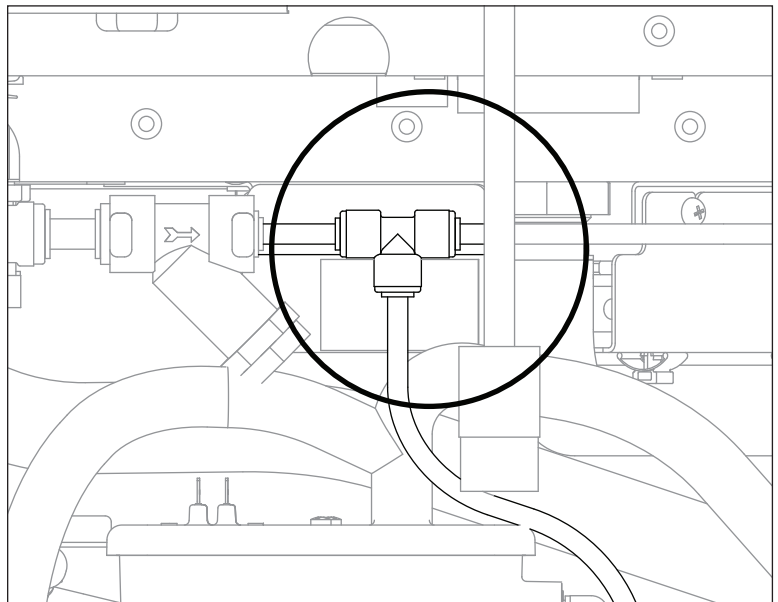
14. Install top bearing insulation (Fig. 8.3).

Fig. 8



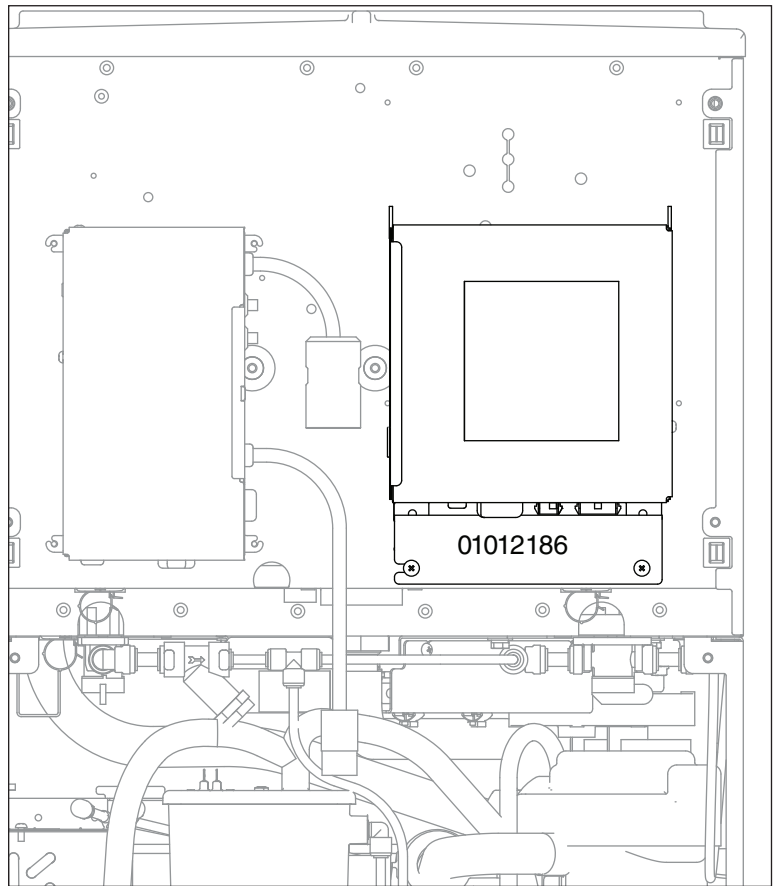
15. Attach module water tube to existing "T" fitting (Fig. 9).

Fig. 9



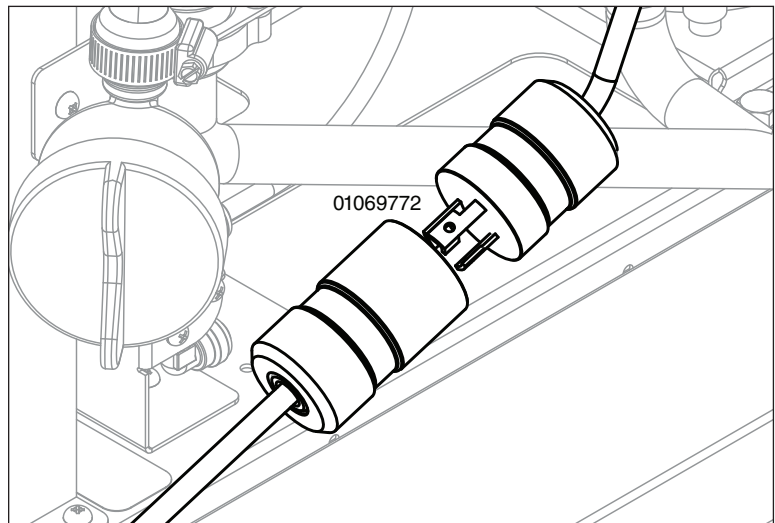
16. Hang electrical box on dispenser front and attach with supplied bracket (Fig. 10).

**Fig. 10**



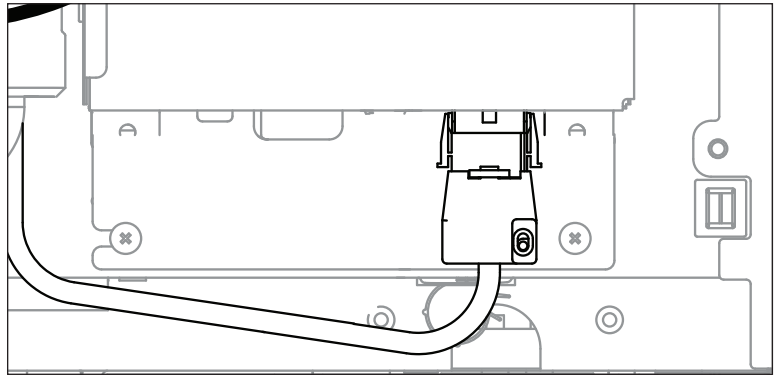
17. Install supplied internal power cord adapter (Twist-Lock) (Fig. 11).

**Fig. 11**



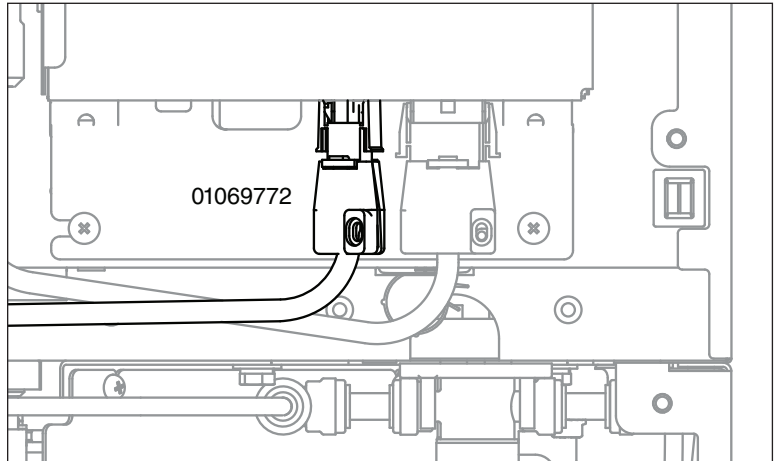
18. Plug other end (Mate N Lock) into electrical box (**Fig. 12**).

**Fig. 12**



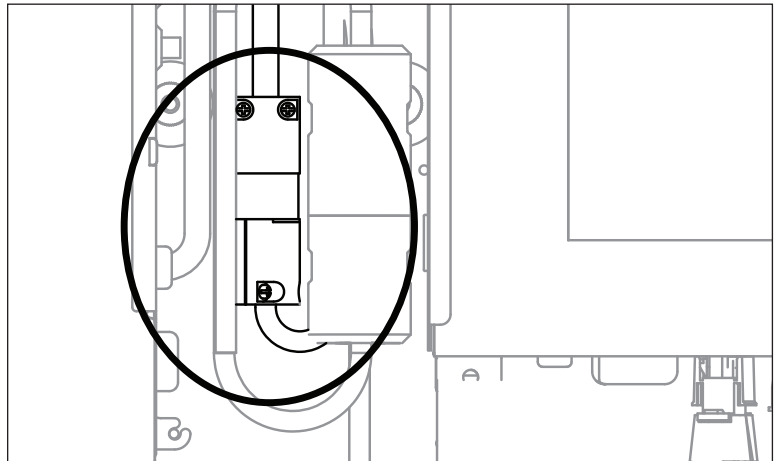
19. Plug two-pin bin thermostat cable into electrical box (**Fig. 13**).

**Fig. 13**



20. Connect other end to dispenser (Twist Lock connection) (**Fig. 14**).

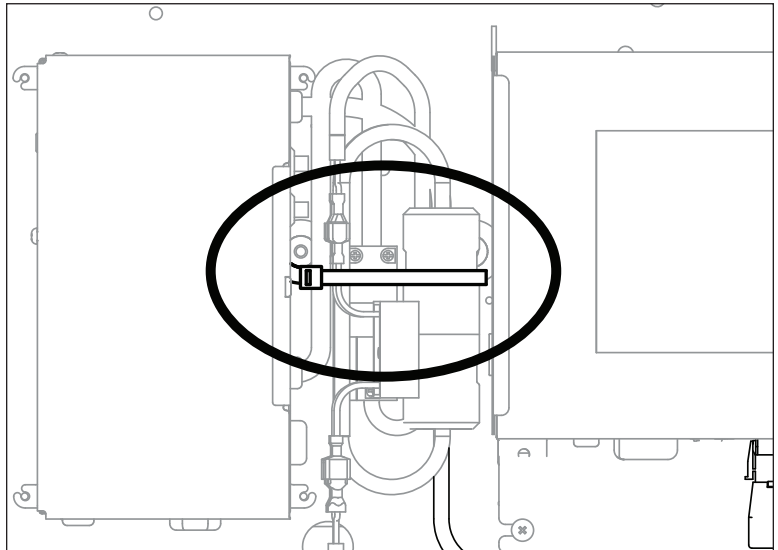
**Fig. 14**



21. Push module fully into position.

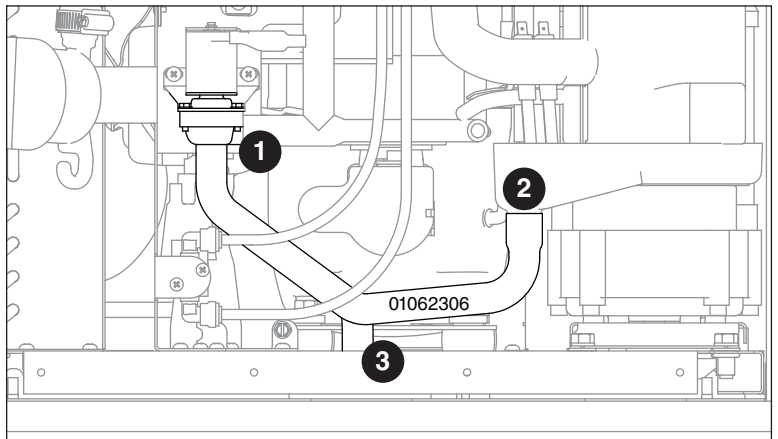
22. Organize power and bin signal cables and wire tie plugs together (**Fig. 15**).

**Fig. 15**



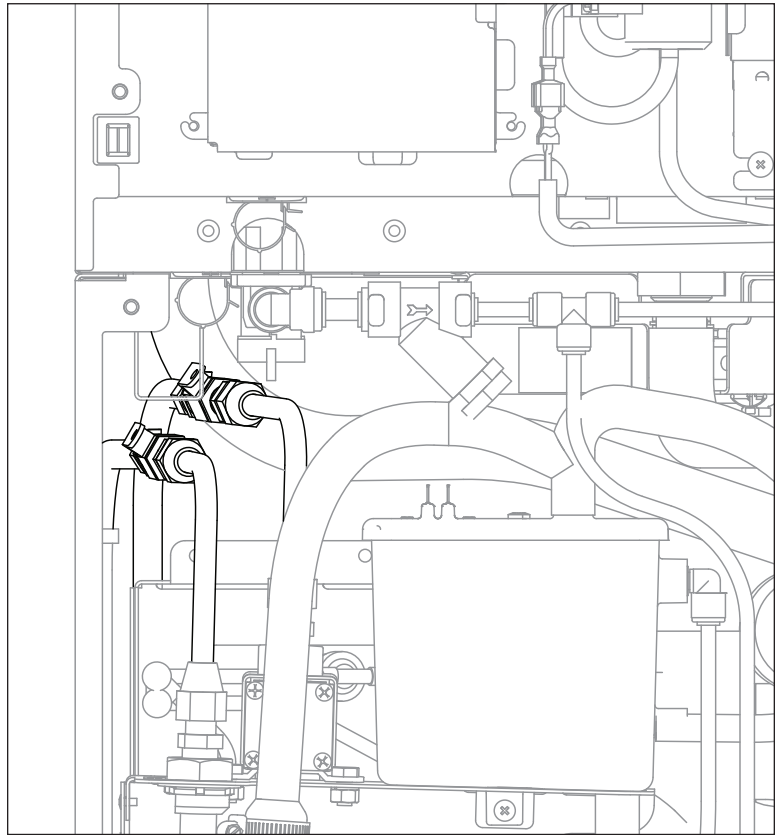
23. Install supplied drain tube onto drain solenoid (**Fig. 16.1**) and evaporator drain pan (**Fig. 16.2**). Ensure that drain stub is inserted into hole in ice machine base above drain cup (**Fig. 16.3**).

**Fig. 16**



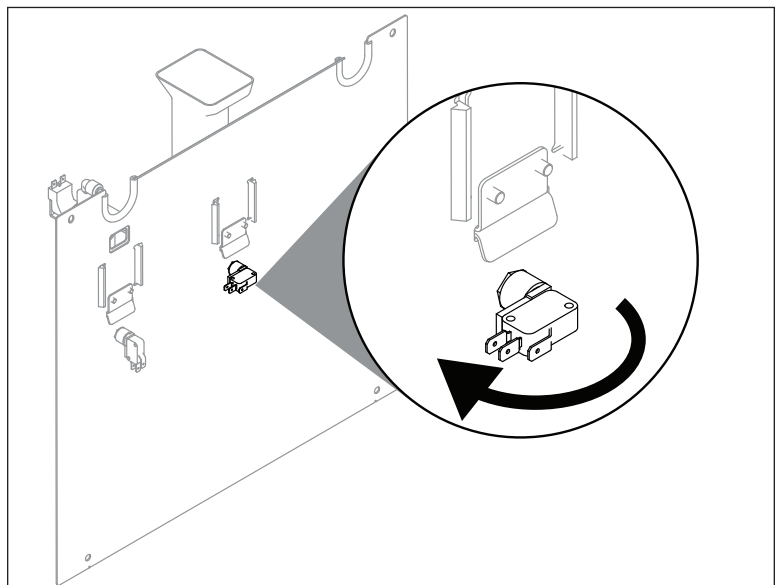
24. For water-cooled units, make water connections (**Fig. 17**)

**Fig. 17**



25. For lever-operated dispensers, remove and rotate ice switch on back of splash panel 180° (**Fig. 18**).
26. Move splash panel into position, connect water line to water dispense solenoid, turn on water to solenoid and attach splash panel.
27. Start up machine and check for proper operation. Restore power and water to machine.
28. Sanitize machine prior to use. See appropriate Operation and Service manual shipped with the unit.

**Fig. 18**







Maestro Plus and Symphony are trademarks of Follett LLC.  
Follett is a registered trademark of Follett LLC, registered in US.



801 Church Lane • Easton, PA 18040, USA  
Toll free (877) 612-5086 • +1 (610) 252-7301  
[www.follettice.com](http://www.follettice.com)

01033687R04  
© Follet LLC 9/17