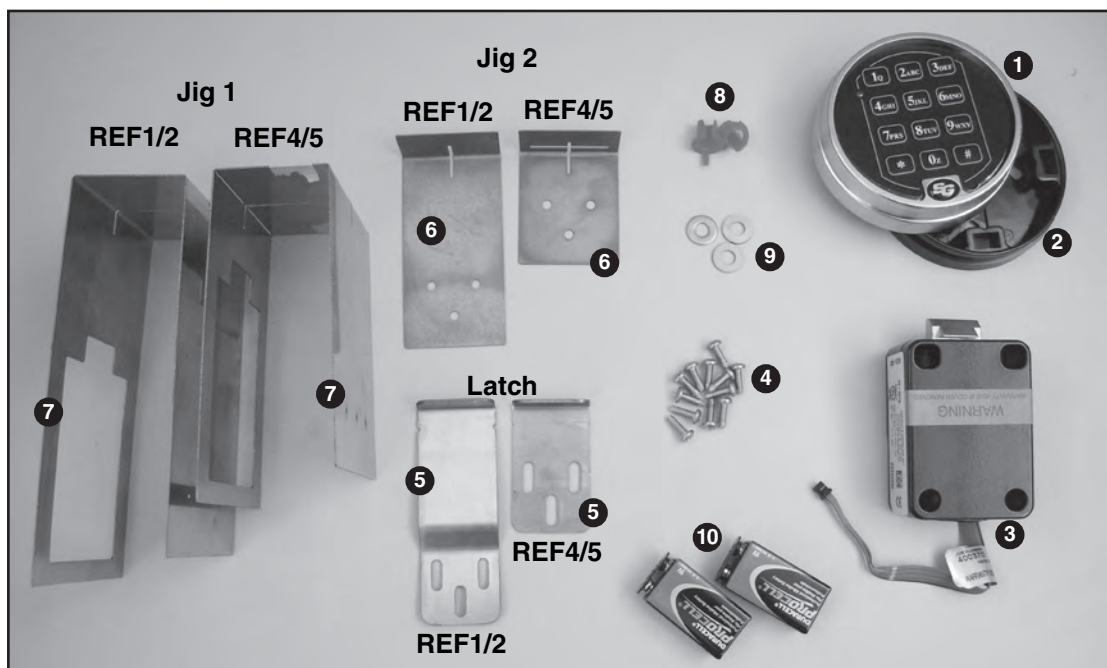


Installation Instructions

**Materials supplied**

**Reference #**

Keypad assembly (housing and mounting base)	1
Keypad housing base	2
Lock mechanism with cable	3
(9) 8-32 x 1/2" stainless steel screws	4
Latch	5
Jig 2, latch	6
Jig 1, keypad and latch	7
(2) Grommets	8
(3) Spacers	9
(2) 9-volt batteries	10



## Special tools required

Drill	Tape measure
Drill bits (.136 #29 and 3/8")	Hole tap (8-32)
Thin point marker	Center punch
Screwdriver	

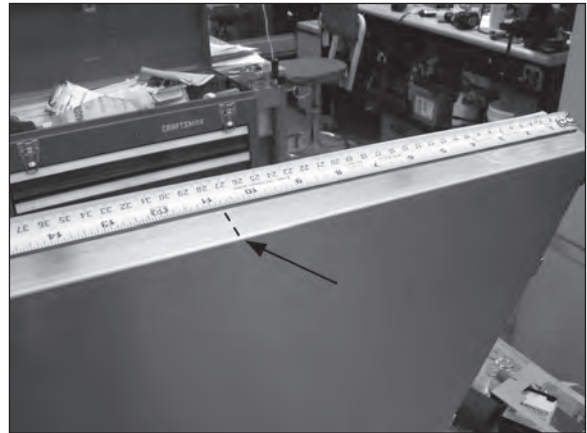
**Note: Once an existing Follett REF refrigerator has been retrofitted with a keypad lock, the door will no longer be field-reversible.**

Should you have any questions or require technical help at any point, please call our technical service group at (800) 523-9361 or (610) 252-7301.

## Mounting keypad and lock mechanism

1. Measure across top of door and mark centerline (Fig. 1).

Fig. 1



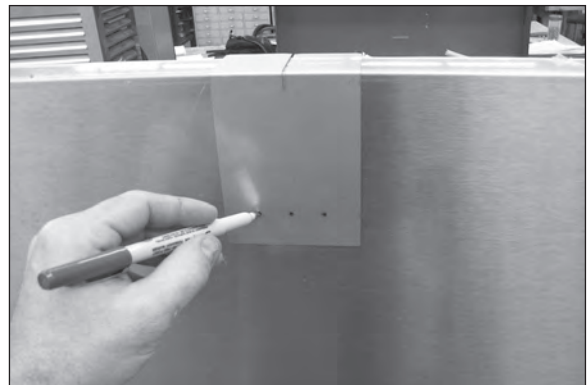
2. Place jig 1 over door, with 3-hole side on door front, matching centerline to slot on jig (Fig. 2).

Fig. 2



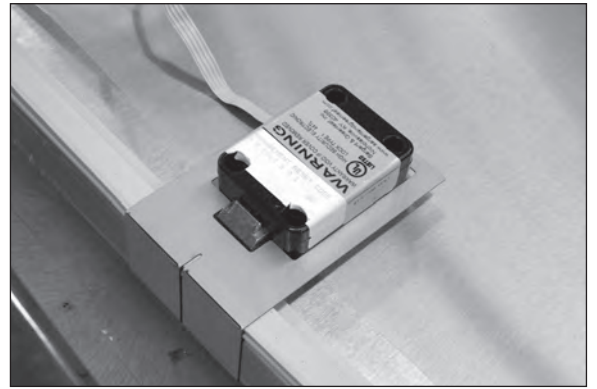
3. Mark 3 holes through jig onto door front (Fig. 3).

Fig. 3



4. Position lock mechanism in jig cutout on door back. Thread wire cable connector through jig (**Fig. 4**).

**Fig. 4**



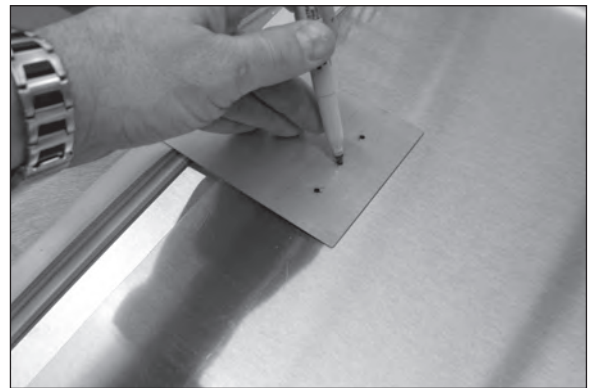
5. Mark 4 holes onto door back through lock (**Fig. 5**).
6. Remove lock mechanism.

**Fig. 5**



7. Reverse jig on door, aligning slot in jig with centerline mark. Mark center hole on back on door (**Fig. 6**).
  8. Center punch all marked holes.
  9. Drill all holes with .136 (#29) drill bit.
- Warning: Do NOT drill completely through door.**

**Fig. 6**

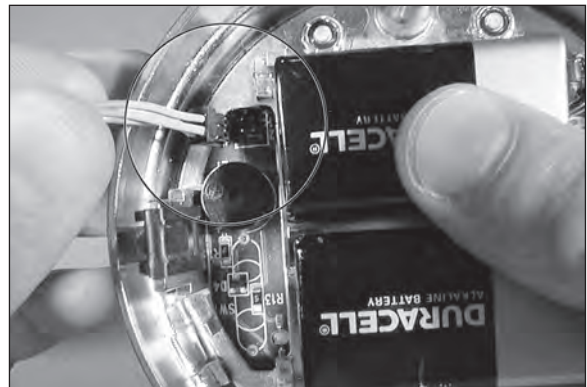


10. Tap all holes (except center front and center back holes) with 8-32 tap.
11. From door front, redrill center hole with 3/8" drill bit.  
**Warning: Do NOT try to drill completely through from one side to the other.**
12. From door back, redrill center hole with 3/8" drill bit.  
**Warning: Do NOT try to drill completely through from one side to the other.**
13. Install supplied grommets to center holes on front and back side of door.
14. Run wire cable connector through door from back to front through grommeted holes.
15. Attach lock to door back with 4 supplied screws.
16. Push free end of wire cable connector through back of center hole in keypad mounting base.
17. Position mounting base with alignment pin at bottom and attach door front with 2 supplied screws (**Fig. 7**).
18. Install 2 supplied 9-volt batteries in keypad housing.

**Fig. 7**



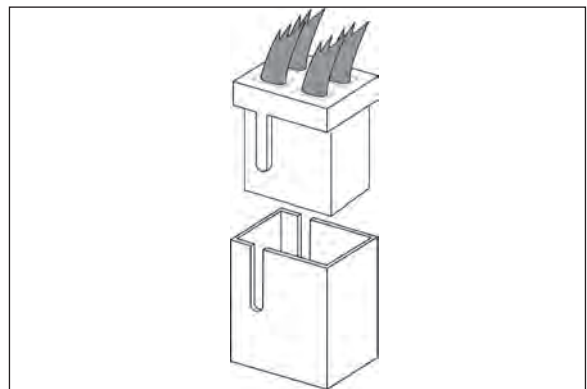
**Fig. 8**



19. Plug wire connector cable into keypad circuit board receptacle (**Fig. 9**). Connector will fit only when ridge on connector is aligned with slot on receptacle (see **Fig. 10**).

**Warning: If connector does not slide easily into place, check orientation of connector. Do NOT force.**

**Fig. 9**



20. Hold keypad housing close to mounting base while folding excess wire inside housing. Position wire away from spring clips that hold keypad housing to base (**Fig. 10**).
21. Place keypad housing over base and push firmly until housing snaps into place. Keep wires away from spring clips while pushing to avoid damage to wires.
22. Enter code 1 2 3 4 5 6 # on keypad and verify that slip bolt on lock mechanism retracts.

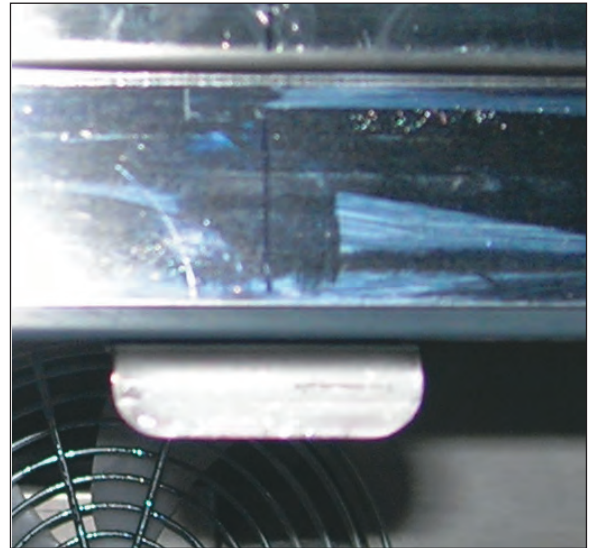
**Fig. 10**



### Mounting latch

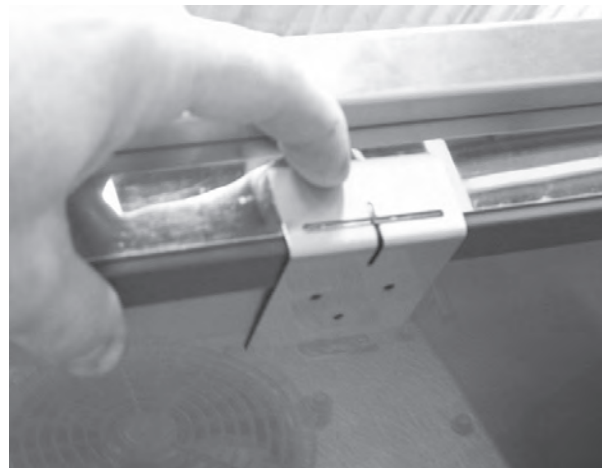
1. Close door and transfer centerline mark from door to top jam of refrigerator (**Fig. 11**).

**Fig. 11**



2. Position jig 2 with 3-hole side against refrigerator ceiling, matching slot in jig with centerline mark (**Fig. 12**).

**Fig. 12**



**Note: Be sure to use the correct jig for REF1/2 or REF4/5.**

3. Mark 3 holes on refrigerator ceiling through jig.
4. Remove jig.
5. Center punch holes and drill with .136 (#29) drill bit.

**Warning: Do NOT drill through refrigerator top.**

6. Tape holes with 8-32 tap.

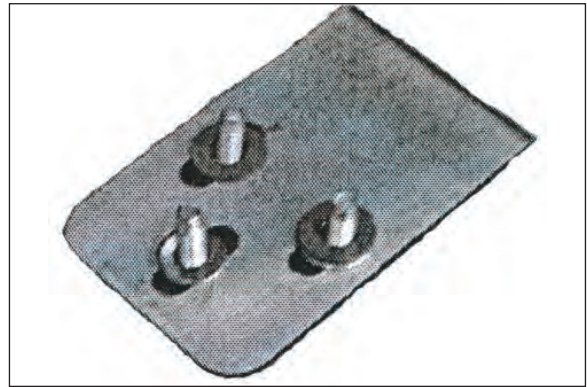
7. Position latch with tongue facing DOWN and space latch off inside refrigerator ceiling by placing supplied spacers over oval holes on top of latch (**Fig. 13**).

**Note: Be sure to use the correct latch for REF1/2 or REF4/5.**

8. Loosely secure latch to refrigerator ceiling with 3 supplied screws.

**Note: Do NOT tighten.**

**Fig. 13**



### Aligning latch depth

1. Slip latch tongue through slots in jig 2 and press jig flush with front face of refrigerator (**Fig. 14**).
2. Tighten screws holding latch.
3. Close door and verify lock is engaged. Adjust latch depth as needed.
4. Enter code 1 2 3 4 5 6 # on keypad and wait a few seconds for slip bolt to retract.
5. Open door.

**Fig. 14**





Follett is a registered trademarks of Follett Corporation, registered in US.

---



801 Church Lane • Easton, PA 18040, USA  
Toll free (877) 612-5086 • +1 (610) 252-7301  
[www.follettice.com](http://www.follettice.com)

00170704R01  
© Follett Corporation 6/14