

Installation Instructions

Description

The instructions are for replacing the compressor on REF series refrigerators.

If you experience any problems during the installation of this kit, please call Follett Technical Service toll-free at (877) 612-5086 or +1 (610) 252-7301 for assistance.

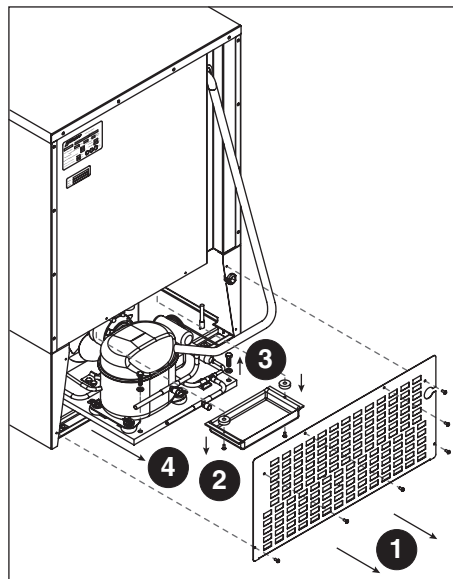
Materials Supplied

- Compressor with starting components, overload and mounting feet hardware and (2) copper tube kit 1/4", 5/16" and Tecumseh instruction (P/N 01059781)
- Cap tube and drier for REF4/5 models (P/N 00103267) or filter drier (P/N 502724) for REF-5BB models
- 1/4" Schrader fitting (P/N 01026004)
- Velcro-loop 4" (P/N 206405)
- Velcro-hook 4" (P/N 206406)
- Ty-wrap (P/N 00112227) x4
- 90 elbow 1/2 x 1/2 (P/N 206526) not included with P/N 01061951
- 4" tubing (P/N 205149) not included with P/N 01061951
- Ty-wrap (P/N 201776) x4
- Hose clamp (P/N 202011) not included with P/N 01061951
- 13" tubing (P/N 205149) not included with P/N 01061951
- 30" insulation (P/N 204865)

Installation

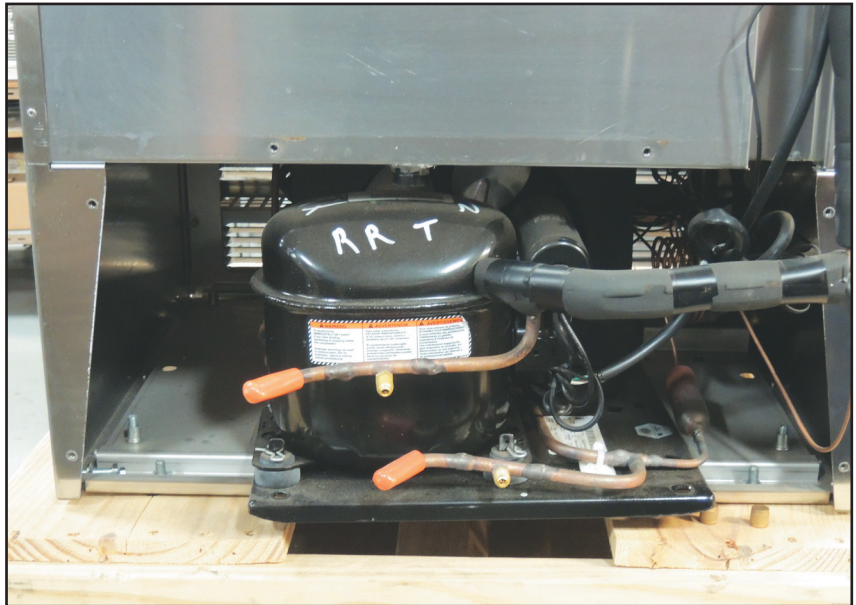
1. Remove rear louvered cover (and drain pan on REF4/5 models).
2. Remove the two (2) bolts securing the condensing unit and slide the condensing unit out several inches for easier access.

Fig. 1



3. Recover the refrigerant from the unit and remove the insulation back at least 6 inches from suction line "tee" fitting.

Fig. 2



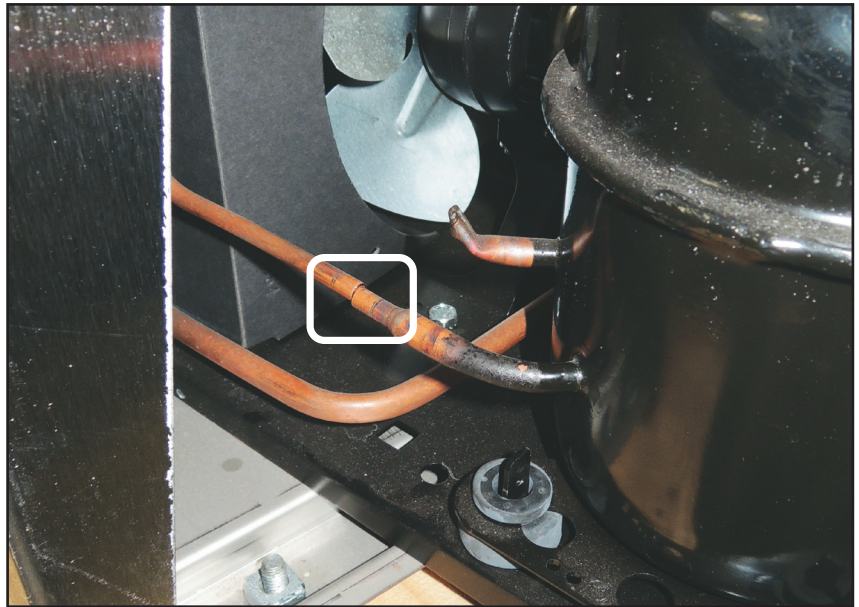
4. Cut the suction line back approximately 1" from the brazed connection of the "tee" fitting.
5. Remove the four cotter pins and washers for the compressor mounts.

Fig. 3



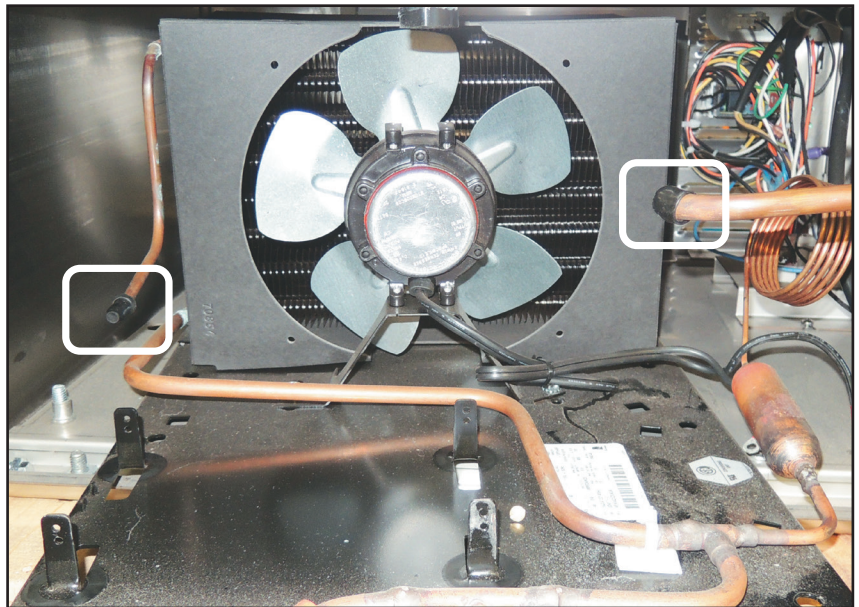
- Cut the discharge line approximately 1 inch from the brazed connection of the compressor discharge stub.

Fig. 4



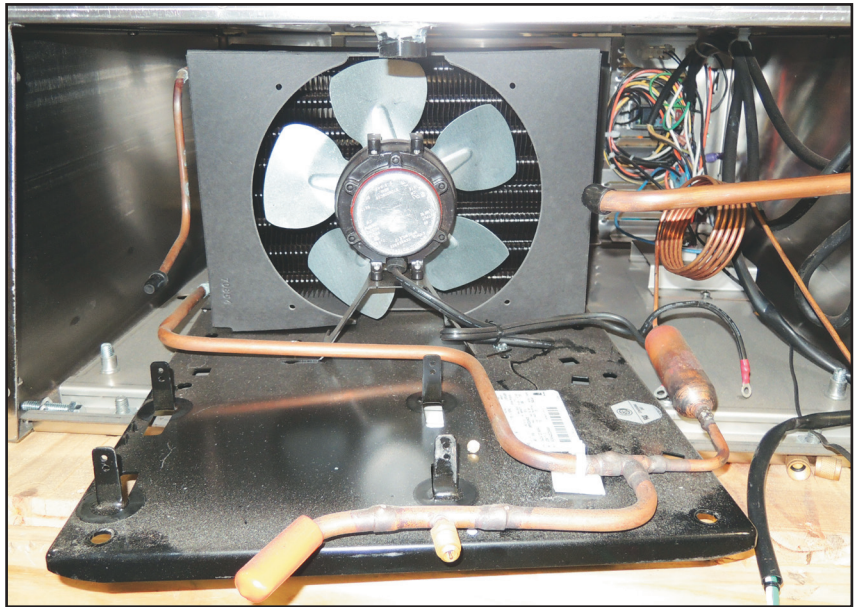
- Temporarily cap discharge line and suction line.
- Remove wiring to old compressor and remove old compressor

Fig. 5



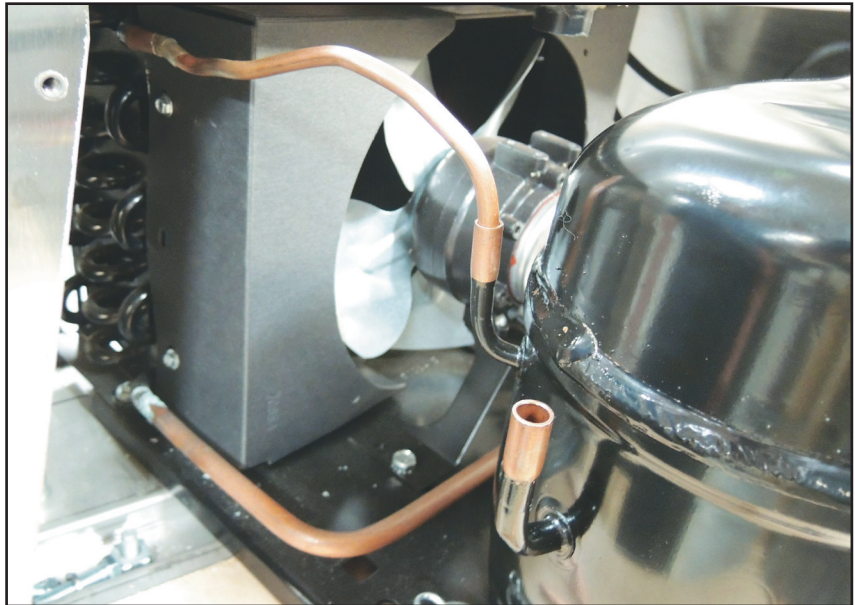
9. A new cap tube and filter drier is included for REF 4/5 models and a new filter drier is included for REF 5BB models and is recommended to be changed as well.
10. Install new compressor mounts on new compressor and set compressor in place on condensing unit.

Fig. 6



11. Hand-form existing tubing to connect to discharge stub or fabricate new copper tube to connect to discharge stub.

Fig. 7



12. Fabricate new copper tube to connect to compressor suction stub.

Fig. 8



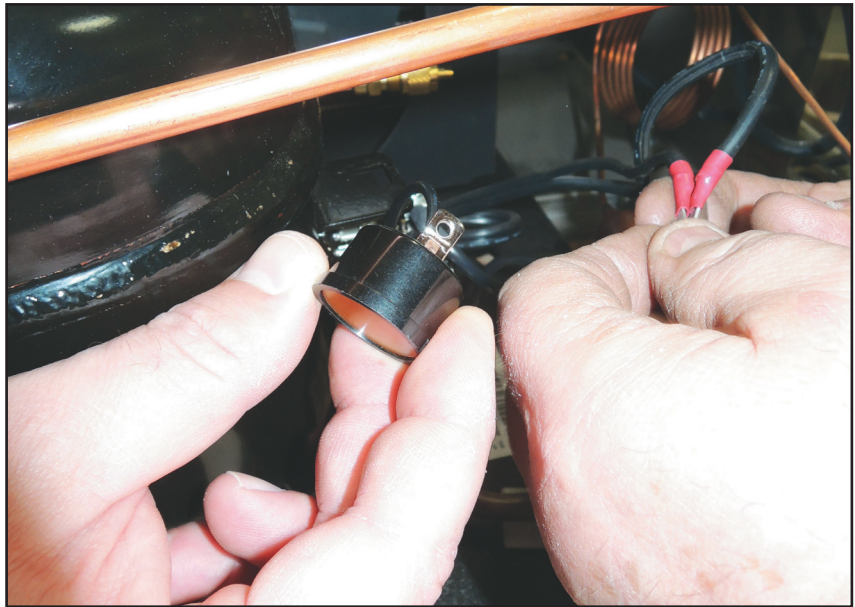
13. Install supplied Schrader fitting to stub on compressor.

Fig. 9



14. Connect wiring to new compressor, be sure to connect ground wire to the body of compressor.

Fig. 10



15. Using a nitrogen purge, braze all joints.
16. Leak check and evacuate to at least 500 microns for 30 minutes.
17. Charge unit with R404A refrigerant (7.9 oz on REF 4/5 and 10 oz on REF 5BB)
18. The replacement compressor is taller and will not allow the drain pan to be installed in the original position (on REF4/5 models).
 - Adhere the supplied Velcro tape to the bottom of the drain pan (Fig. 11).

Fig. 11



19. Reinsulate suction line with supplied insulation and wire tie in place using supplied wire ties.

Fig. 12



20. Assemble the drain hose and drain.

Fig. 13



21. Locate the drain pan next to the left side panel approximately 6 inches back from the rear lip of the unit.
22. Install the new drain line as pictured.
23. Apply power to the refrigerator and allow it to pull down to temperature and cycle.
24. Install rear cover.

Fig. 14



Follett is a registered trademarks of Follett Corporation, registered in US.



801 Church Lane • Easton, PA 18040, USA
Toll free (877) 612-5086 • +1 (610) 252-7301
www.follettice.com

01061969R00
© Follett Corporation 6/14