

Service Guide
 (For 15 Series after serial number J45503)

Description

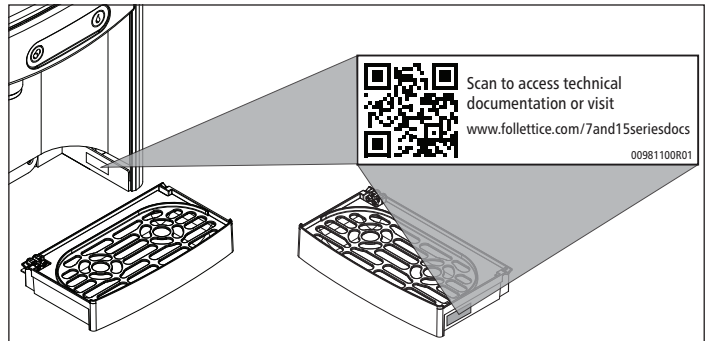
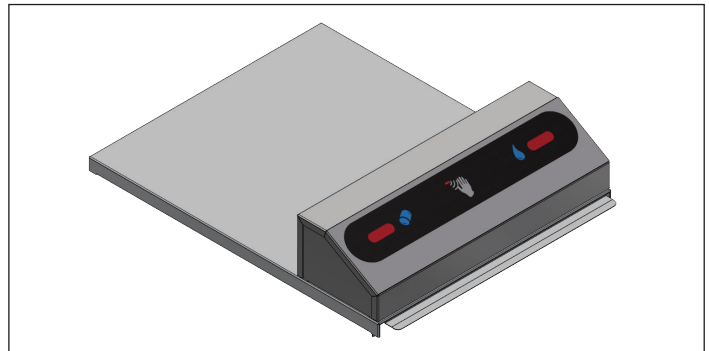
The Follett Touchless Dispensing Accessory allows the user to dispense both ice and water without ever making physical contact with the machine. Placing the hand 1/4" to 1-3/8" above the corresponding sensor will activate the dispense mechanism.

Before You Begin

A QR code is located on the right hand side of the drip tray. Scanning the code allows you to find and view a video demonstrating the installation procedure of this kit.

Manuals, technical bulletins, and on-line training videos related to the 7 Series and 15 Series dispensers will also be found on the QR code landing page.

Should you have need technical help, please call our Technical Service group at (877) 612-5086 or (610) 252-7301.



Required Tools

- Phillips-head screwdriver
- Needle-nose pliers

Component List

- Strain relief
- Touchless SensorSAFE lid assembly
- Ground screw
- Dispenser wiring harness
- Wire ties (Qty 2)
- Schematic label

Specifications

	7CI100A	15FS100A
Width	14.50" (40 cm)	14.50" (40 cm)
Depth	22.12" (56.2 cm)	23.50" (59.7 cm)

Electrical

- 115 V, 60 Hz, 1 phase, 5A, maximum fuse 15A

Installation

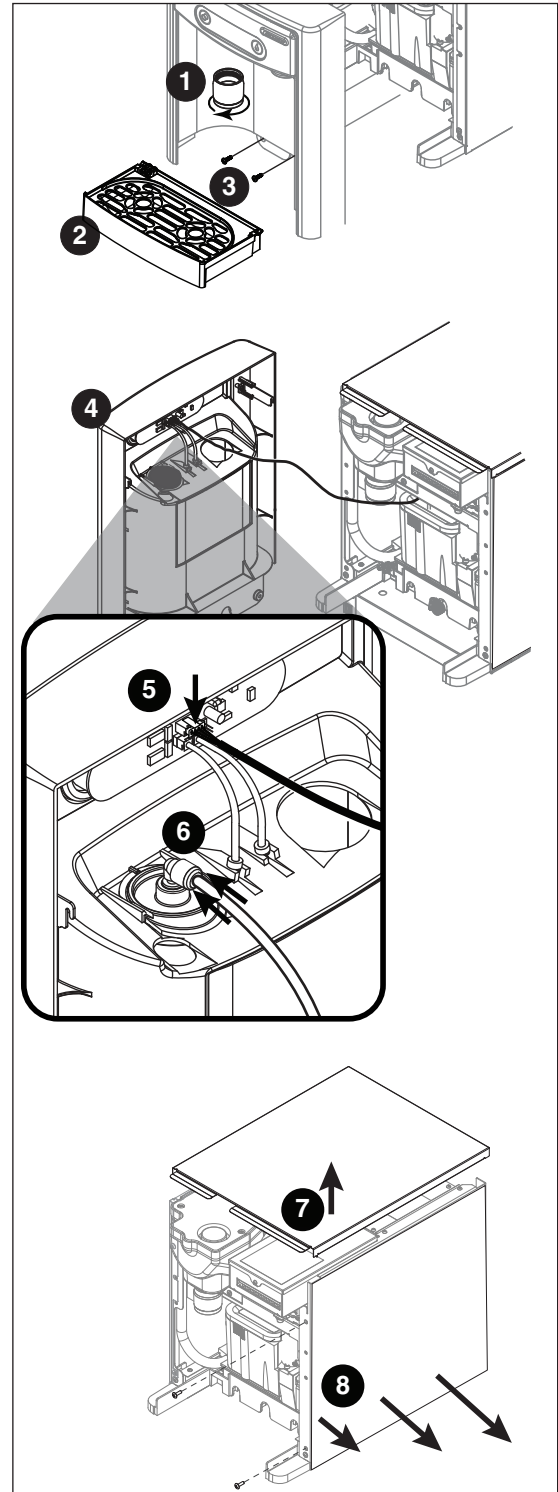


CAUTION!

Except for routine cleaning and sanitizing, only qualified technicians should attempt to service or maintain this equipment.

1. Unplug the dispenser.
2. Remove (unscrew) chrome ice dispenser chute (**Fig. 1.1**).
3. Pull drip tray forward and remove (**Fig. 1.2**).
4. Remove the two screws (**Fig. 1.3**) on the front panel (behind the drip tray).
5. Lift up and remove the front panel (**Fig. 1.4**).
6. Carefully disengage the plug on the back of the User Interface (**Fig. 1.4**) by pressing the release tab and gently pulling the connector - **not the wires!**
7. Disconnect the water line (**Fig. 1.6**) by depressing the outer locking ring while pulling the tubing from the John Guest fitting. Set aside the front panel.
8. Lift and remove the top panel, set aside (**Fig. 1.7**).
9. **For 15 Series unit only** - Remove two screws (**Fig. 1.8**) and pull panel to the right to remove right side panel.
10. Locate the electrical box, remove the screw that fastens the electrical box cover and remove the cover.

Fig. 1 Access Internal Components

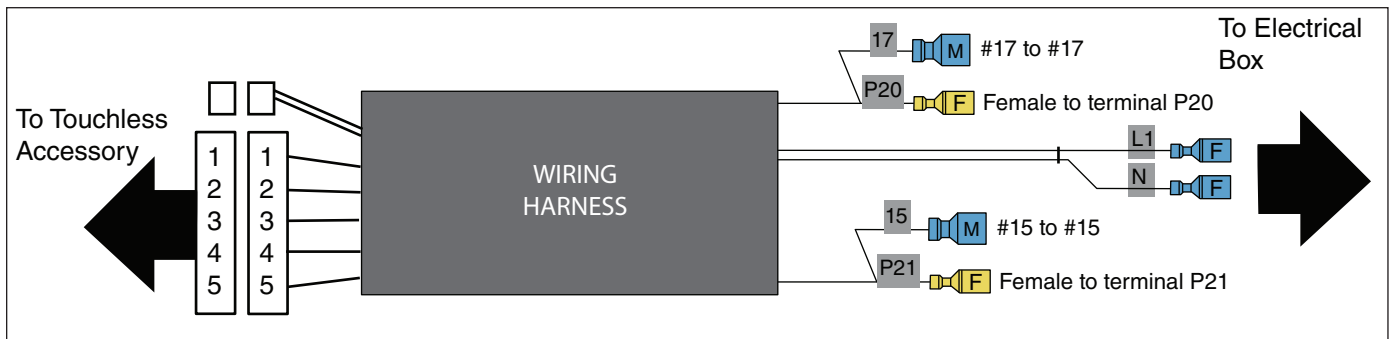
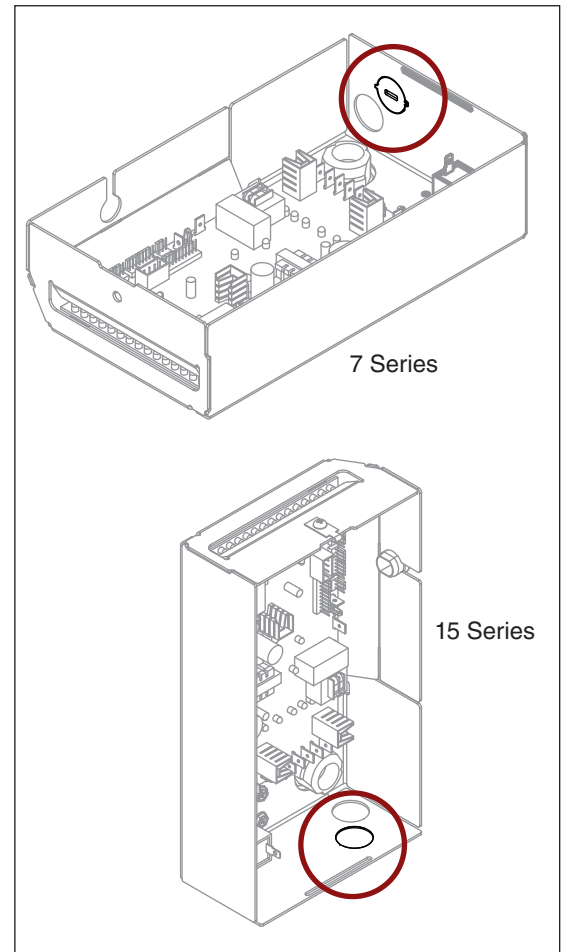


- Remove the knock-out at the back (7 Series) or bottom (15 Series) of the electrical box (**Fig. 2**).

Note: The electrical box is oriented differently in the 7 Series and the 15 Series units, but the location of the knock-out relative to the electrical box is the same.

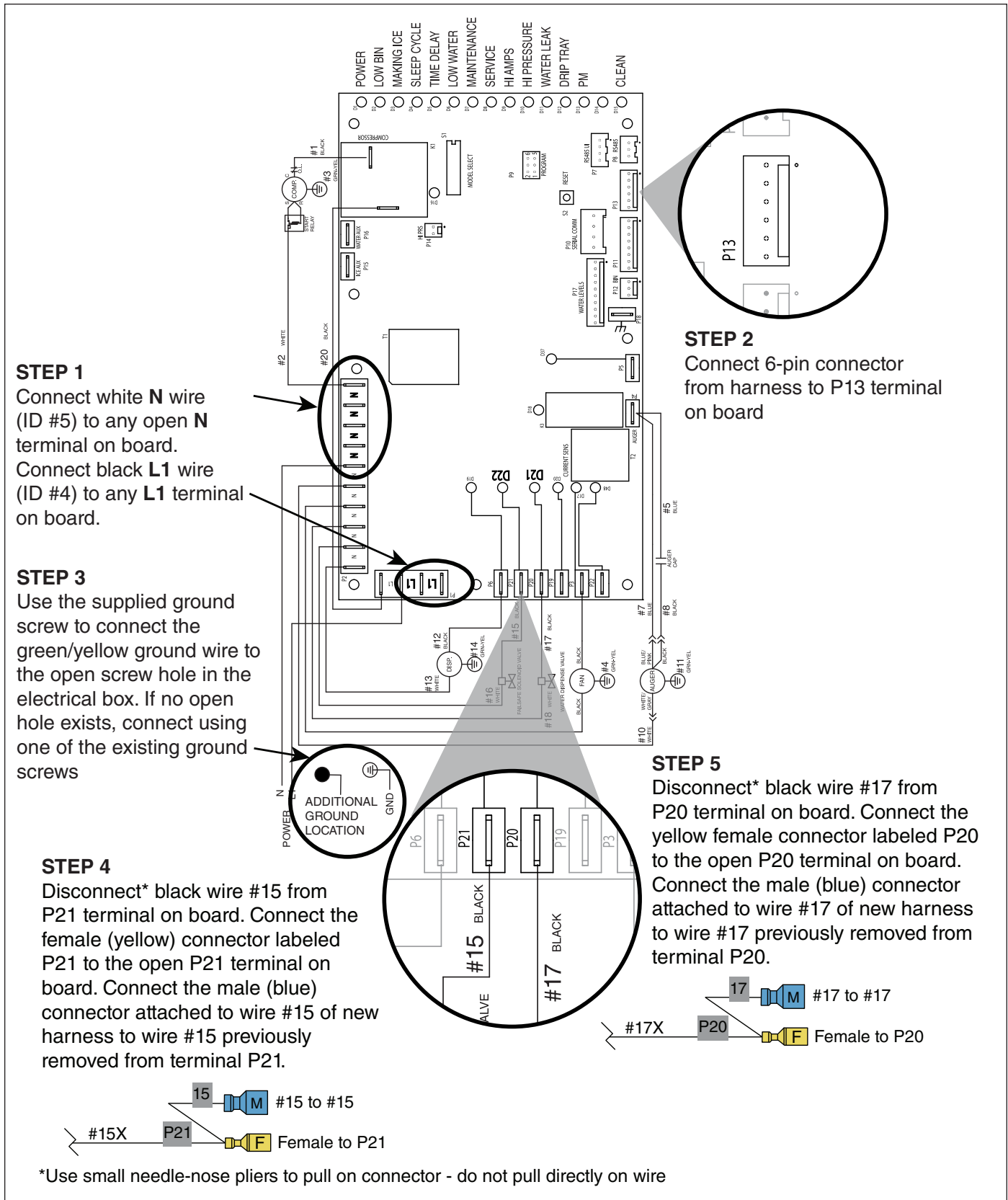
- Thread the wiring harness (*not the large, white connector end*) through the knock-out and into the electrical box.
- Make the wiring harness connections as shown in **Figure 3 (next page)**.

Fig. 2 Remove Knock-out



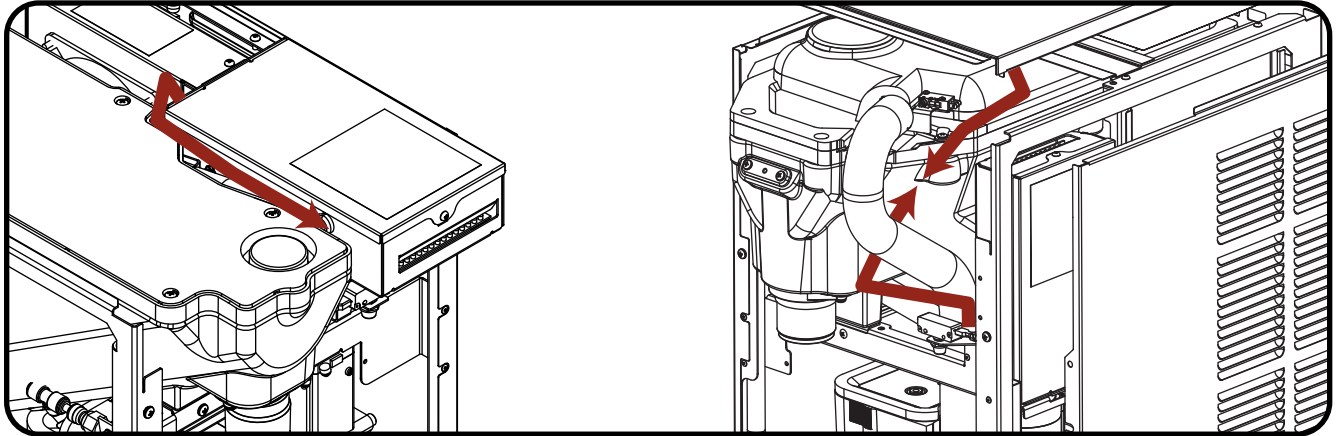
Note: For easy reference each wire of the new harness (inside the electrical box) is tagged with the number or letter of the terminal on the board to which it will be connected. For clarity, not all the wires are shown in the illustration above.

Fig. 3 Wiring Connections



14. When finished making all the connections, insert the strain relief in the knock-out. **IMPORTANT:** Insert the strain relief from the outside of the electrical box (7 series) or the inside of the electrical box (15 series).
15. Route the wiring harness (**Fig. 4**):
 - **7 Series:** Route the harness so that it is captured between the electrical box and the ice bin.
 - **15 Series:** Route the harness so that it sits behind the ice transport tube.

Fig. 4

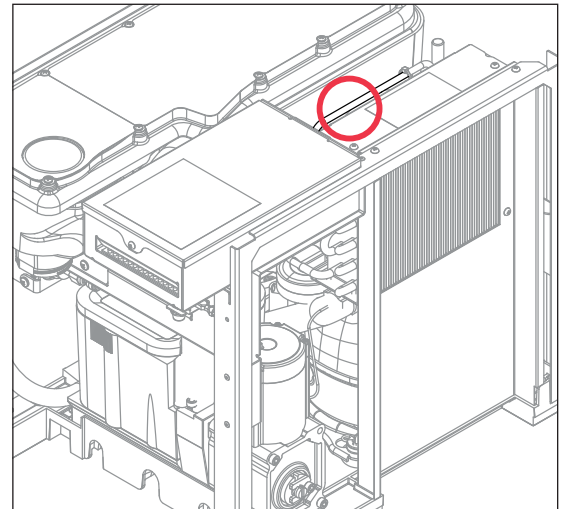


7 Series Harness Routing

15 Series Harness Routing

16. For 7 Series units only, secure the wire harness to the refrigeration liquid line using the supplied ty-rap (**Fig. 5**).
17. Attach the supplied, new electrical schematic over the existing schematic on the underside of the electrical box cover.
18. Replace the electrical box cover and screw.
19. Reinstall the right side panel (if applicable) by aligning the tabs in the panel with the slots in the rear panel and then fastening with the two screws removed in Step 9.
20. Set the new Touchless Accessory cover on top of the unit and connect the two wiring harnesses. Ensure wiring is clear of possible pinch points.
21. Reconnect the interface cable and water line to the back of the front panel. Reinstall the front panel, drip tray, and chrome ice dispense chute.

Fig. 5

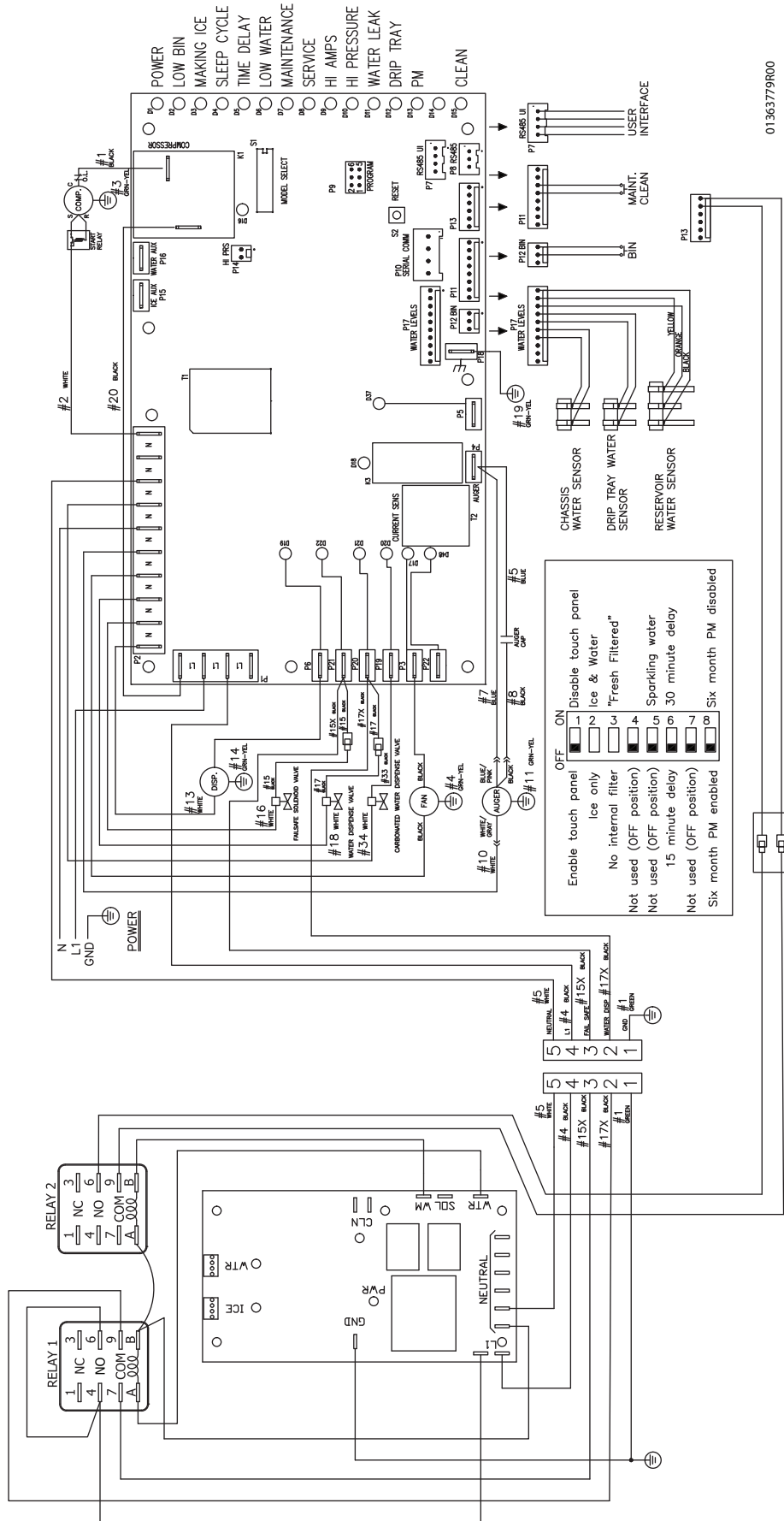


22. Restore power to the dispenser.
23. Place a cup under the ice dispense chute and place your hand 1/4" to 1-3/8" above the ice dispense sensor to ensure that it dispenses ice. Repeat for the water dispense sensor.

Cleaning

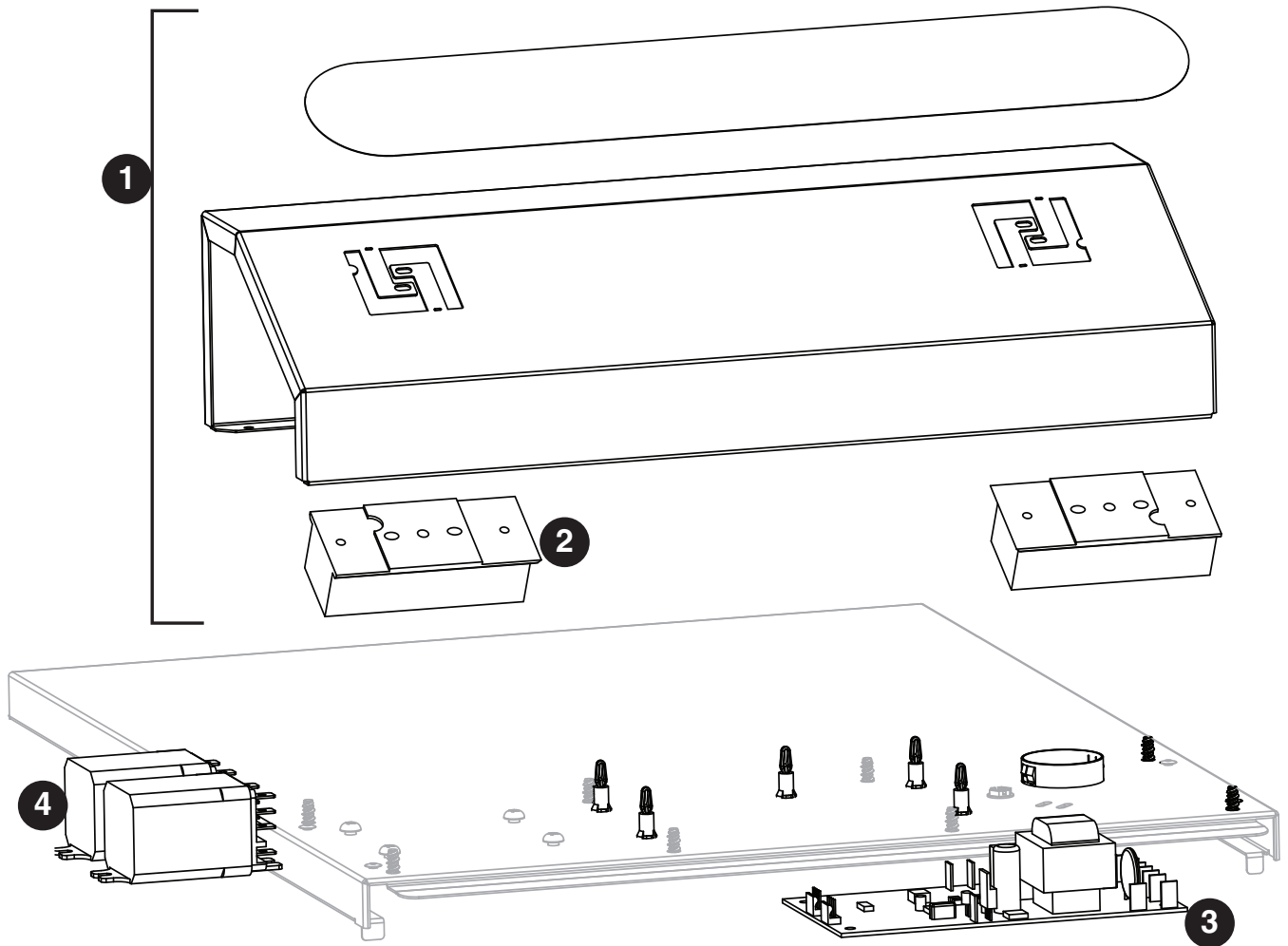
1. Deactivate dispensing by pressing and releasing clean switch located on the front panel behind the water dispense chute so that only "ICE" displays in the user interface.
2. Clean lens and splash panel front using a soft cloth and mild, non-abrasive, non-chlorine based cleaner.
3. Reactivate dispensing by pressing and releasing clean switch again so that the ice icon also displays in the user interface.

Wiring Diagram



01363779R00

Service Parts



Reference #	Description	Part #
1	Cover, Touchless Lid Assembly (includes two sensors and label)	01363951
2	Sensor (each)	01363944
3	Control Board, SensorSAFE	502242
4	Relay (each)	501369
Not shown	Packet, Hardware Set	01363969
Not shown	Wire Harness, Control Box	01364058
Not shown	Wire Harness, Sensorsafe Board	01364066
Not shown	Wire Harness, Relays	01364074

SafeCLEAN Plus is a trademark of Follett LLC.
Chewblet and Follett are registered trademarks of Follett LLC, registered in US.



801 Church Lane • Easton, PA 18040, USA
Toll free (877) 612-5086 • +1 (610) 252-7301
www.follettice.com



01365030R00
© Follet LLC 7/20